

ITEM NO.	PART NUMBER	REVISION	DESCRIPTION	QTY.
1	3A17330	A	BIO WALL BOX BACK PLATE SUB-ASSEMBLY 1000	1
2	3A17331	A	BIO WALL BOX LOWER PLATE SUB-ASSEMBLY 1000	1
3	3A17332	A	BIO WALL BOX TOP PLATE SUB-ASSEMBLY 1000	1
4	3A1733R	A	BIO WALL BOX END PLATE SUB-ASSEMBLY RH	1
5	3A1733L	A	BIO WALL BOX END PLATE SUB-ASSEMBLY LH	1
6	3A17334	A	BIO WALL BOX FRONT PLATE SUB-ASSEMBLY 1000	1
7	3C16B33	A	BIO WALL SPACING CORNER PAD	4
8	275-535	n/a	M5 SERATTED HEX FLANGE NUT DIN 6923 ZINC PLATED	41
9	YF00174	n/a	M4 x 5 Pan Hd (Cross) Machine Screw	8

UNLESS OTHERWISE SPECIFIED:
 DIMENSIONS ARE IN MILLIMETERS
 SURFACE FINISH:
 TOLERANCES:
 LINEAR: ± 0.2 mm
 ANGULAR: ± 0.2 °

DEBUR AND
 BREAK SHARP
 EDGES

THICKNESS: mm
 WEIGHT: 28402.35 g
 DO NOT SCALE DRAWING

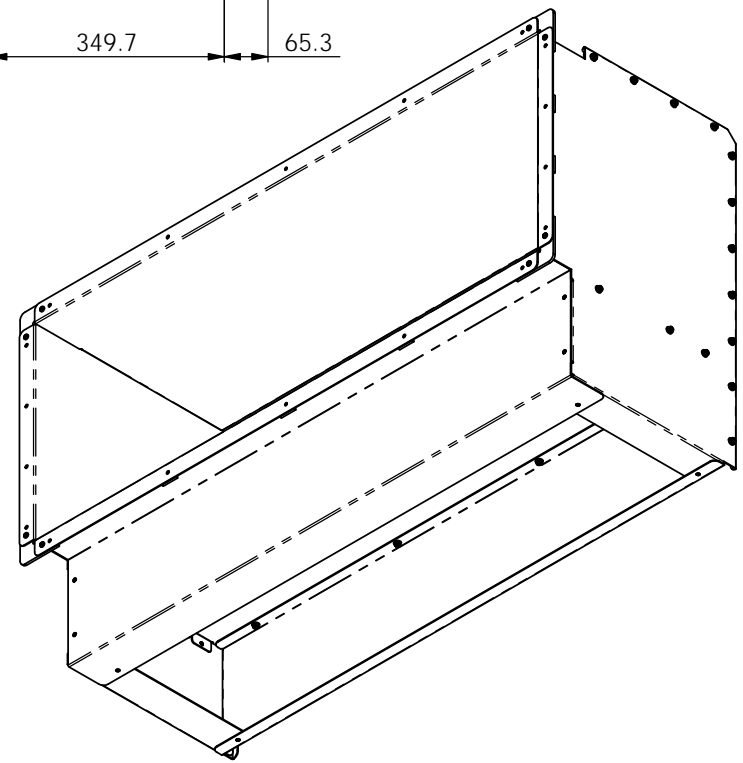
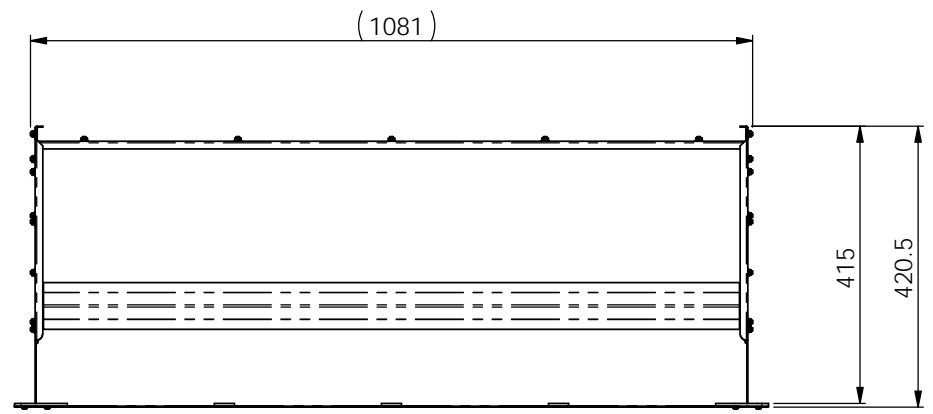
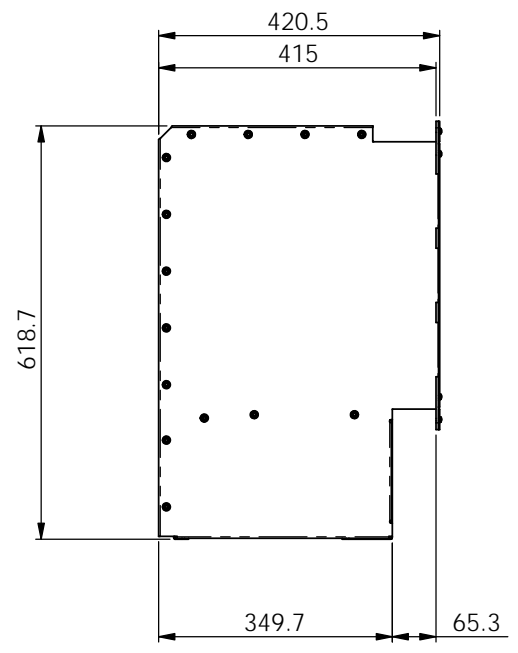
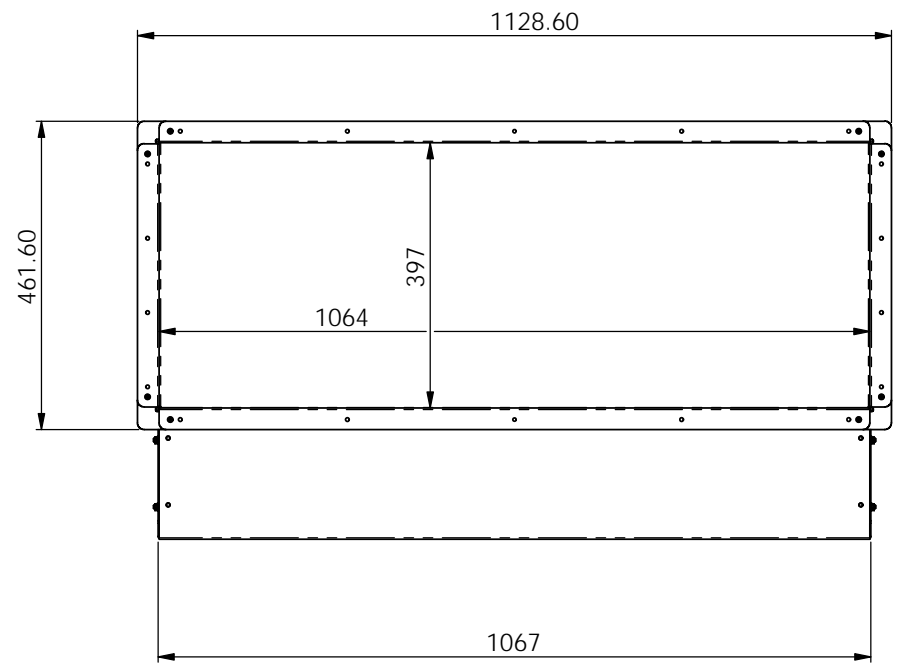
MATERIAL: SEE BOM
 FINISH:



TITLE: BIO WALL BOX SUB-ASSEMBLY 1000

DWG NO. 3A17300
 DRAWN CRG DATE 20 January 2022 14:03:16 SHEET 1 OF 3

REVISION A
 SCALE 1:8
 A3



UNLESS OTHERWISE SPECIFIED:
 DIMENSIONS ARE IN MILLIMETERS
 SURFACE FINISH:
 TOLERANCES:
 LINEAR: ± 0.2 mm
 ANGULAR: ± 0.2 °

DEBUR AND
 BREAK SHARP
 EDGES

THICKNESS: mm
 WEIGHT: 28402.35 g
 DO NOT SCALE DRAWING

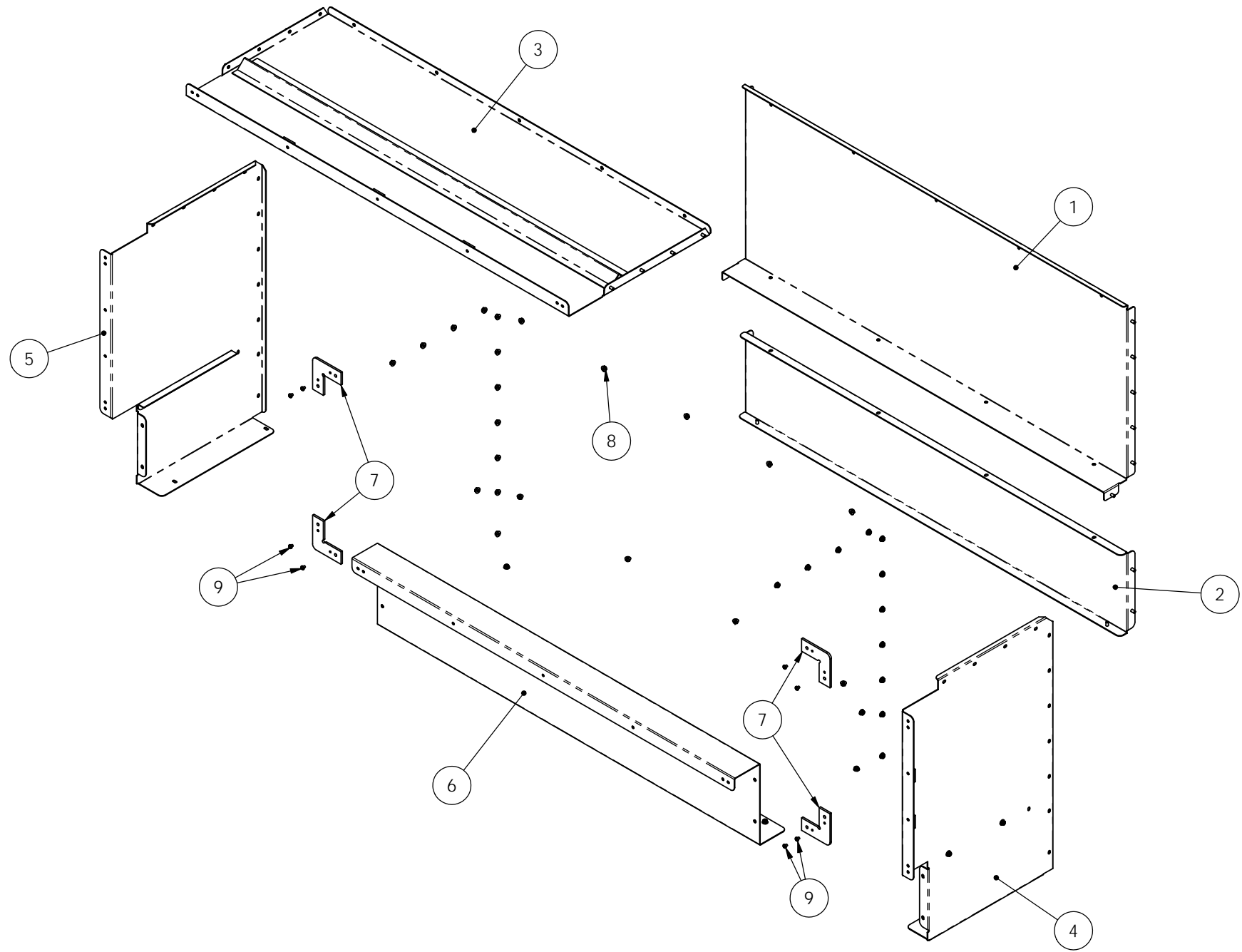
MATERIAL: SEE BOM
 FINISH:



TITLE: BIO WALL BOX SUB-ASSEMBLY 1000

DWG NO. 3A17300
 DRAWN CRG DATE 20 January 2022 14:03:16 SHEET 2 OF 3

REVISION A
 SCALE: 1:8
 A3



UNLESS OTHERWISE SPECIFIED:
 DIMENSIONS ARE IN MILLIMETERS
 SURFACE FINISH:
 TOLERANCES:
 LINEAR: ± 0.2 mm
 ANGULAR: ± 0.2 °

DEBUR AND
 BREAK SHARP
 EDGES

THICKNESS: mm
 WEIGHT: 28402.35 g
 DO NOT SCALE DRAWING

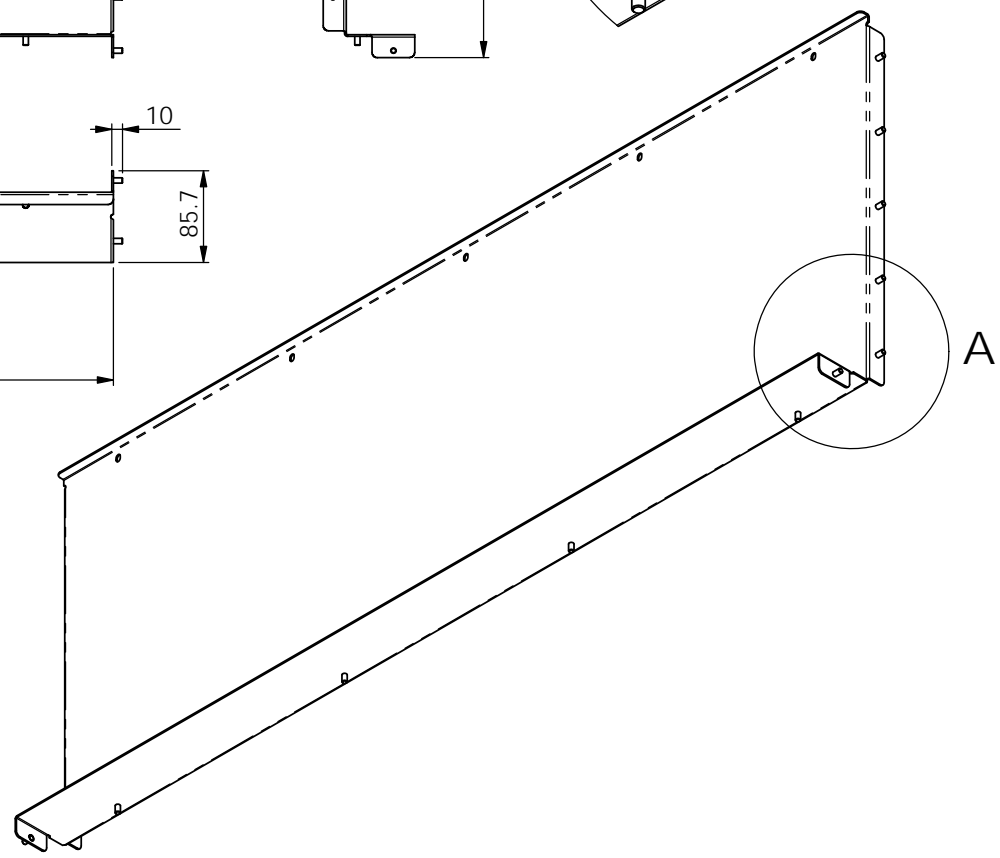
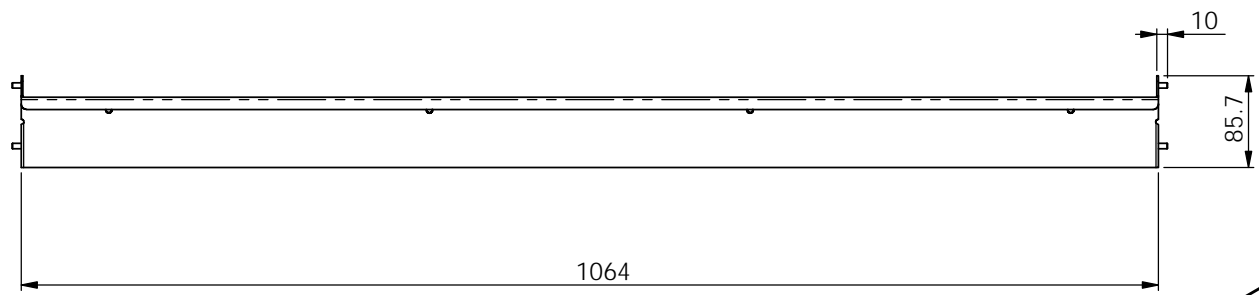
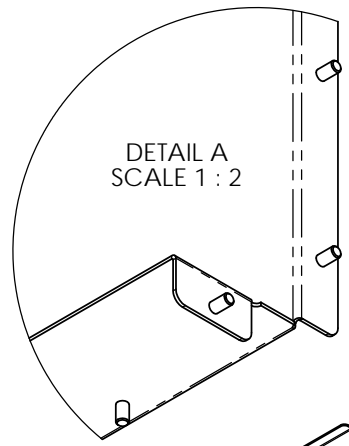
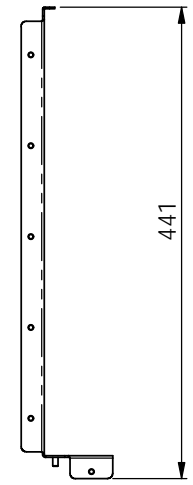
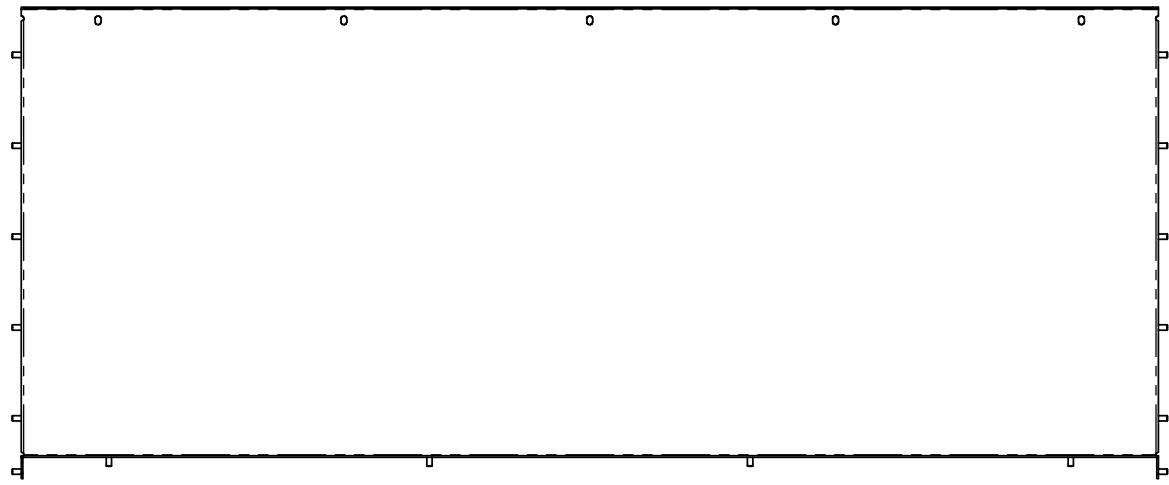
MATERIAL: SEE BOM
 FINISH:



TITLE: **BIO WALL BOX SUB-ASSEMBLY 1000**

DWG NO. **3A17300**
 DRAWN CRG DATE 20 January 2022 14:03:16 SHEET 3 OF 3

REVISION **A**
 SCALE: 1:7.5
 A3



ITEM NO.	PART NUMBER	REVISION	DESCRIPTION	QTY.
1	3C17330	A	BIO WALL BOX BACK PLATE FOLDING 1000	1
2	FHM510	n/a	M5x10 Flush Self Clinching PEM Stud	16

UNLESS OTHERWISE SPECIFIED:
DIMENSIONS ARE IN MILLIMETERS
SURFACE FINISH:
TOLERANCES:
LINEAR: ± 0.2 mm
ANGULAR: ± 0.2 °

DEBUR AND
BREAK SHARP
EDGES

THICKNESS: mm
WEIGHT: 6366.18 g
DO NOT SCALE DRAWING

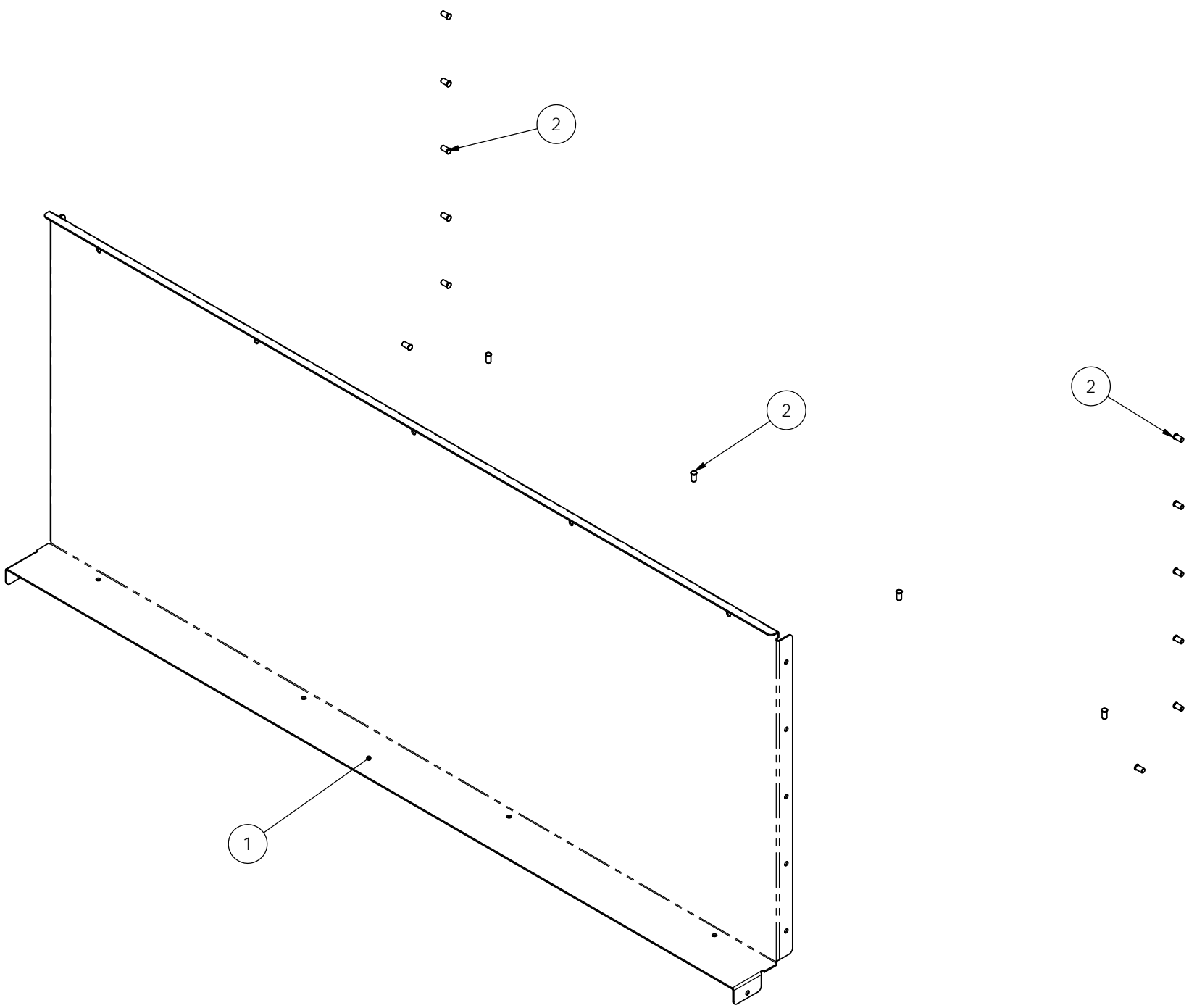
MATERIAL: SEE BOM
FINISH:
AS PER ORDER



TITLE: BIO WALL BOX BACK PLATE SUB-ASSEMBLY 1000

DWG NO. 3A17330
DRAWN CRG DATE 24 January 2022 09:34:29 SHEET 1 OF 2

REVISION A
SCALE: 1:5
A3
PRINT DATE: 25/01/2022



UNLESS OTHERWISE SPECIFIED:
 DIMENSIONS ARE IN MILLIMETERS
 SURFACE FINISH:
 TOLERANCES:
 LINEAR: ± 0.2 mm
 ANGULAR: ± 0.2 °

DEBUR AND
 BREAK SHARP
 EDGES

THICKNESS: mm
 WEIGHT: 6366.18 g
 DO NOT SCALE DRAWING

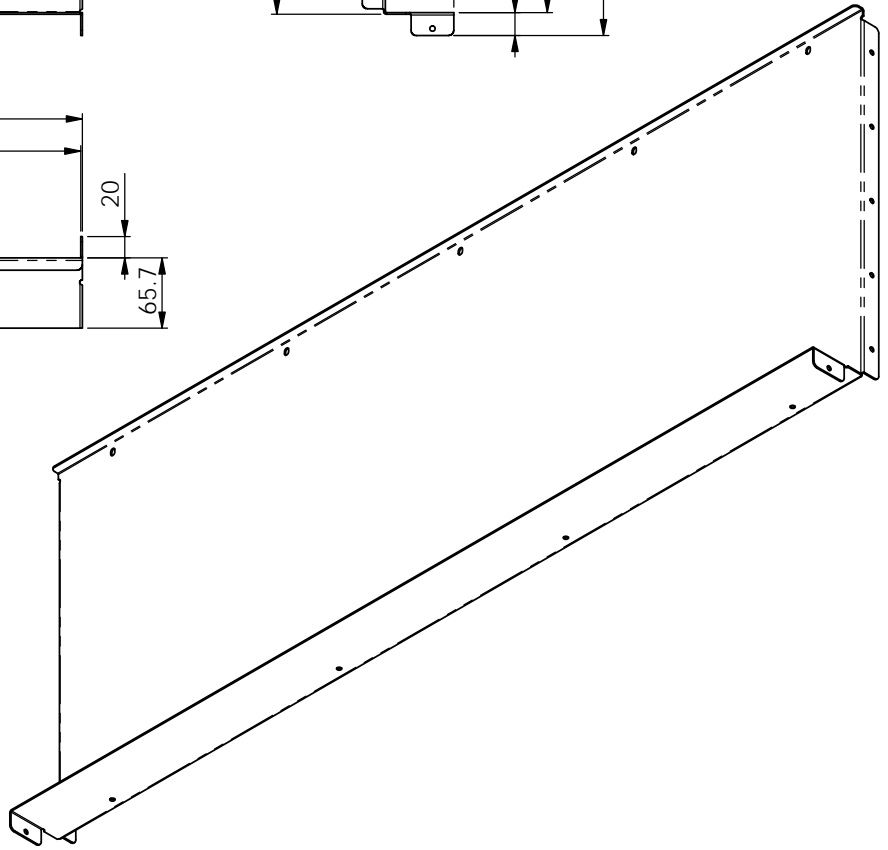
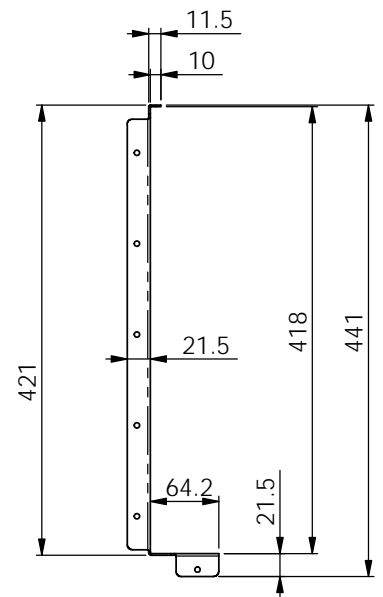
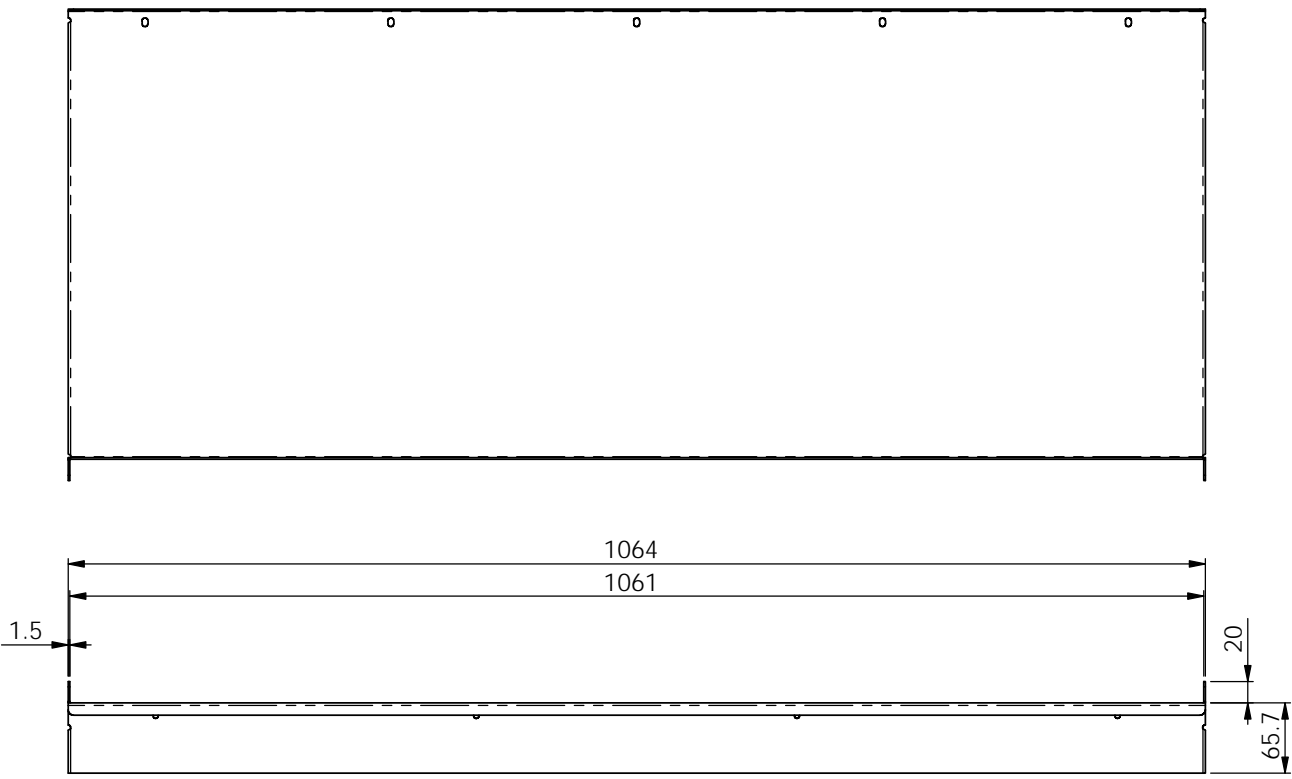
MATERIAL: SEE BOM
 FINISH:
 AS PER ORDER



TITLE: BIO WALL BOX BACK PLATE SUB-ASSEMBLY 1000

DWG NO.	3A17330
DRAWN	CRG
DATE	24 January 2022 09:34:29
SHEET	2 OF 2

REVISION	A
SCALE	1:4
A3	



UNLESS OTHERWISE SPECIFIED:
 DIMENSIONS ARE IN MILLIMETERS
 SURFACE FINISH:
 TOLERANCES:
 LINEAR: ± 0.2 mm
 ANGULAR: ± 0.2 °

DEBUR AND
 BREAK SHARP
 EDGES

THICKNESS: 1.5 mm
 WEIGHT: 6340.81 g
 DO NOT SCALE DRAWING

MATERIAL: Cold Reduced BSEN10130
 FINISH:
 SELF COLOUR

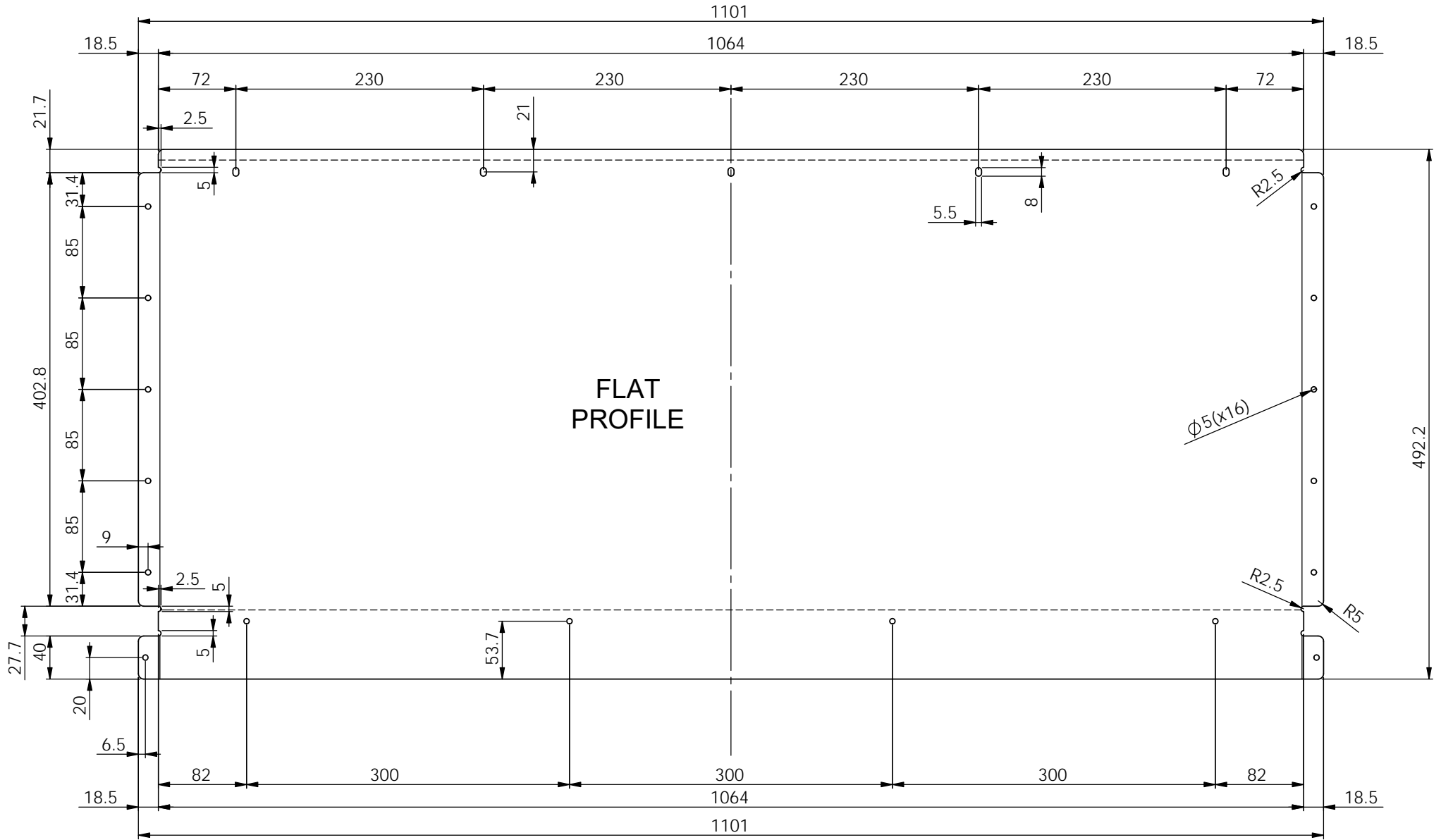


TITLE: BIO WALL BOX BACK PLATE FOLDING 1000

DWG NO. 3C17330
 DRAWN CRG DATE 20 January 2022 13:58:20 SHEET 1 OF 2

REVISION A
 SCALE: 1:5
 A3

REV	CNG NOTE	CNG BY	DATE



UNLESS OTHERWISE SPECIFIED:
 DIMENSIONS ARE IN MILLIMETERS
 SURFACE FINISH:
 TOLERANCES:
 LINEAR: ± 0.2 mm
 ANGULAR: ± 0.2 °

DEBUR AND
 BREAK SHARP
 EDGES

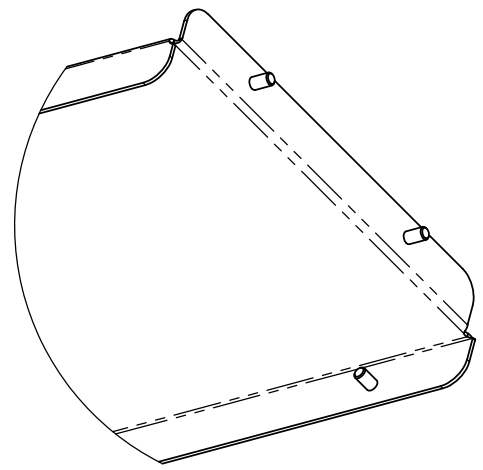
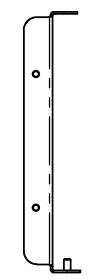
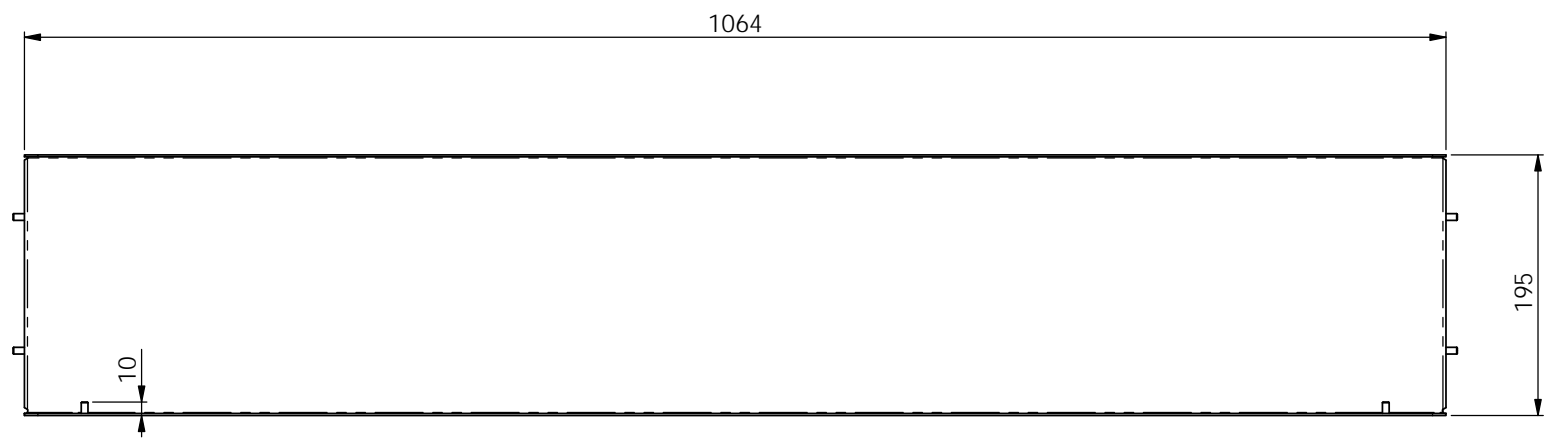
THICKNESS: 1.5 mm
WEIGHT: 6311.80 g
DO NOT SCALE DRAWING

MATERIAL: Cold Reduced BSEN10130
 FINISH:
 SELF COLOUR

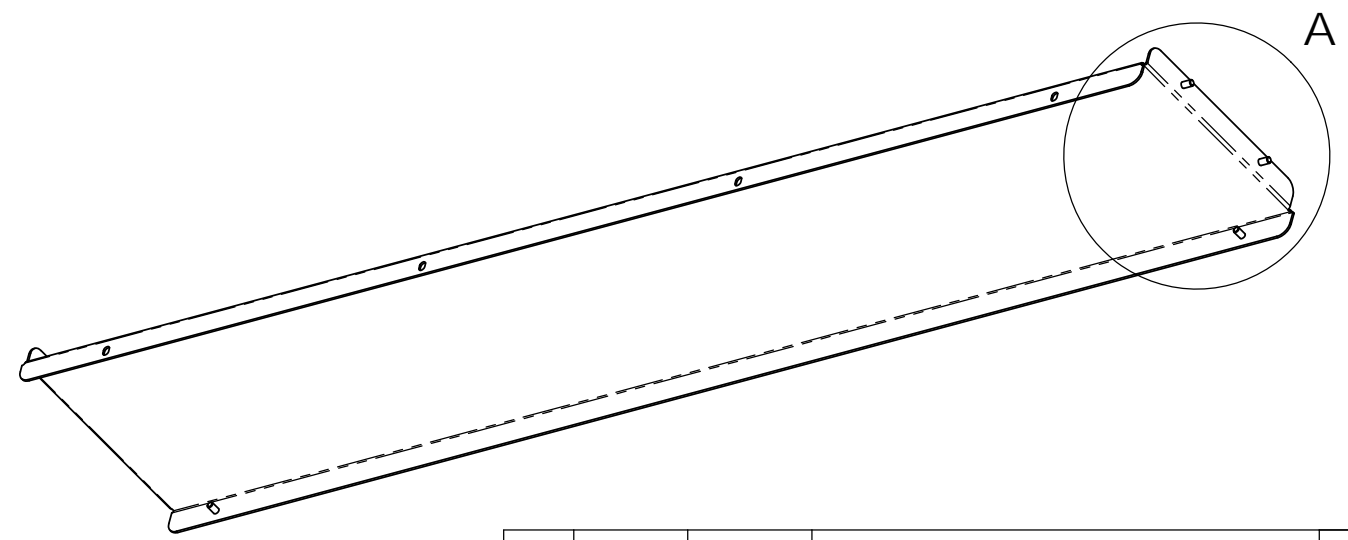


TITLE: BIO WALL BOX BACK PLATE FOLDING 1000
 DWG NO. 3C17330

REVISION A
SCALE: 1:3.5
DRAWN CRG DATE 20 January 2022 13:58:20 SHEET 2 OF 2 A3



DETAIL A
SCALE 1 : 2



ITEM NO.	PART NUMBER	REVISION	DESCRIPTION	QTY.
1	3C17331	A	BIO WALL BOX LOWER PLATE FOLDING 1000	1
2	FHM510	n/a	M5x10 Flush Self Clinching PEM Stud	6

UNLESS OTHERWISE SPECIFIED:
DIMENSIONS ARE IN MILLIMETERS
SURFACE FINISH:
TOLERANCES:
LINEAR: ± 0.2 mm
ANGULAR: ± 0.2 °

DEBUR AND
BREAK SHARP
EDGES

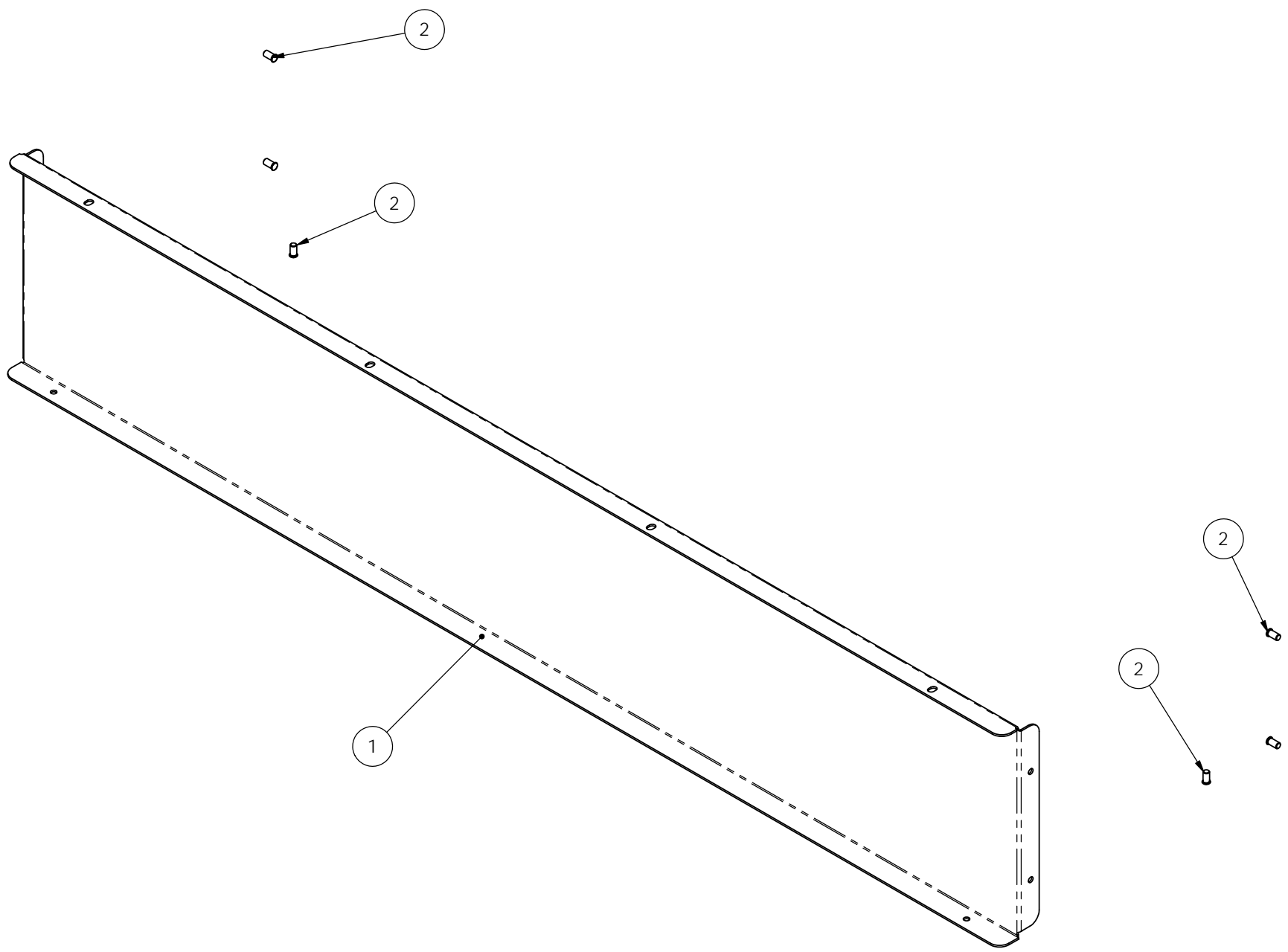
THICKNESS: mm
WEIGHT: 2987.77 g
DO NOT SCALE DRAWING

MATERIAL: SEE BOM
FINISH:
AS PER ORDER



TITLE: BIO WALL BOX LOWER PLATE SUB-ASSEMBLY 1000

DWG NO.	3A17331	REVISION	A
DRAWN	CRG	DATE	24 January 2022 09:57:35
SHEET	1 OF 2	SCALE	1:4
PRINT DATE	25/01/2022		



UNLESS OTHERWISE SPECIFIED:
 DIMENSIONS ARE IN MILLIMETERS
 SURFACE FINISH:
 TOLERANCES:
 LINEAR: ± 0.2 mm
 ANGULAR: ± 0.2 °

DEBUR AND
 BREAK SHARP
 EDGES

THICKNESS: mm
 WEIGHT: 2987.77 g
 DO NOT SCALE DRAWING

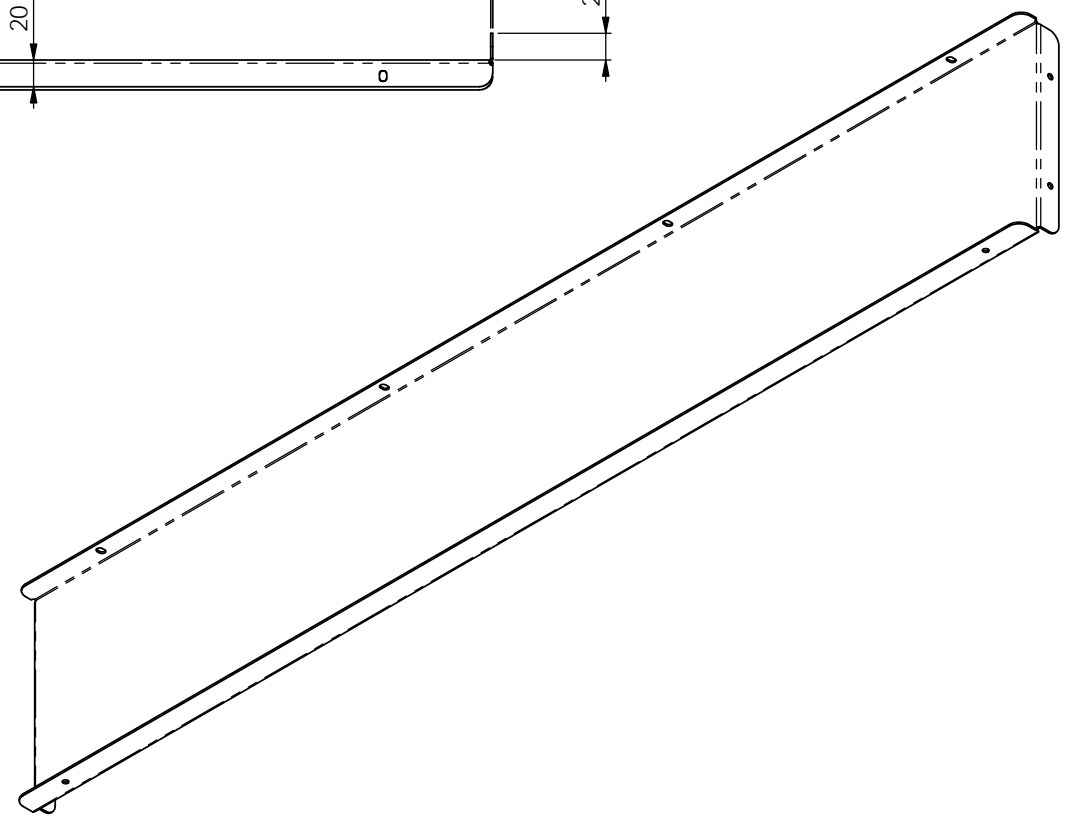
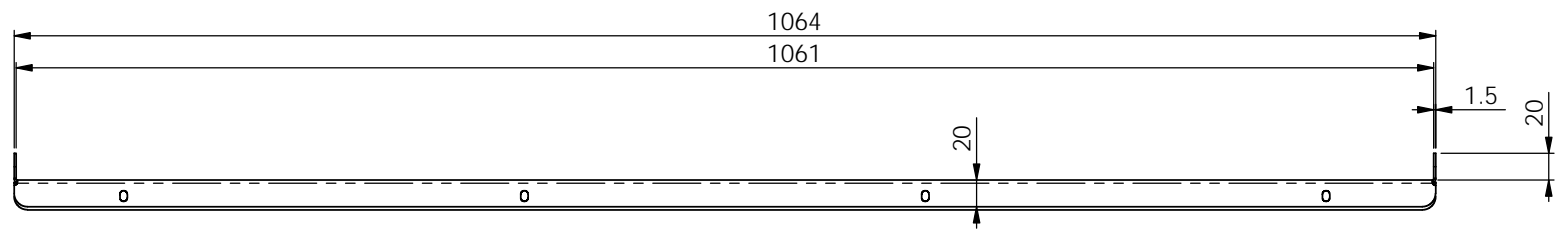
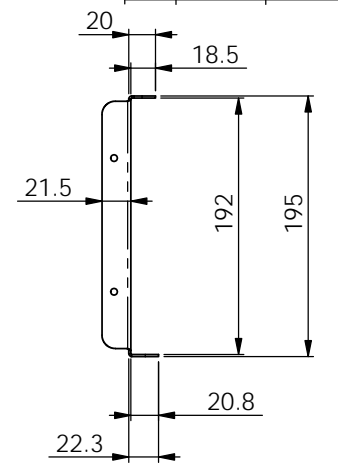
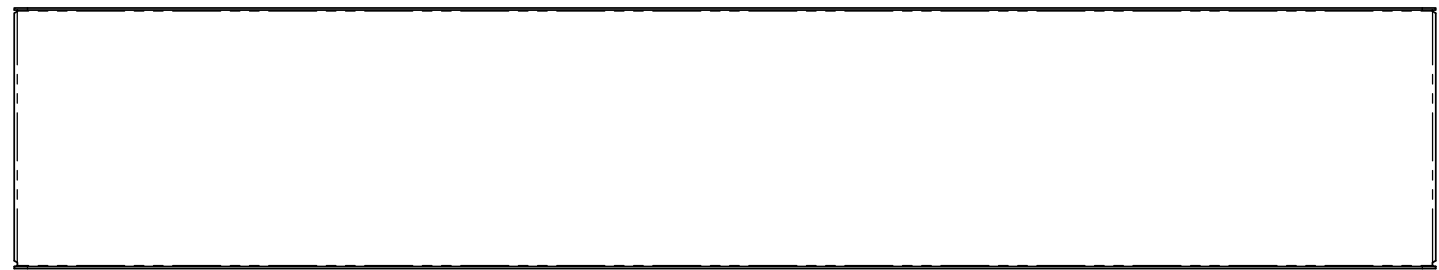
MATERIAL: SEE BOM
 FINISH:
 AS PER ORDER



TITLE: BIO WALL BOX LOWER PLATE SUB-ASSEMBLY 1000

DWG NO. 3A17331
 DRAWN CRG DATE 24 January 2022 09:57:35 SHEET 2 OF 2

REVISION A
 SCALE: 1:3
 A3



UNLESS OTHERWISE SPECIFIED:
 DIMENSIONS ARE IN MILLIMETERS
 SURFACE FINISH:
 TOLERANCES:
 LINEAR: ± 0.2 mm
 ANGULAR: ± 0.2 °

DEBUR AND
 BREAK SHARP
 EDGES

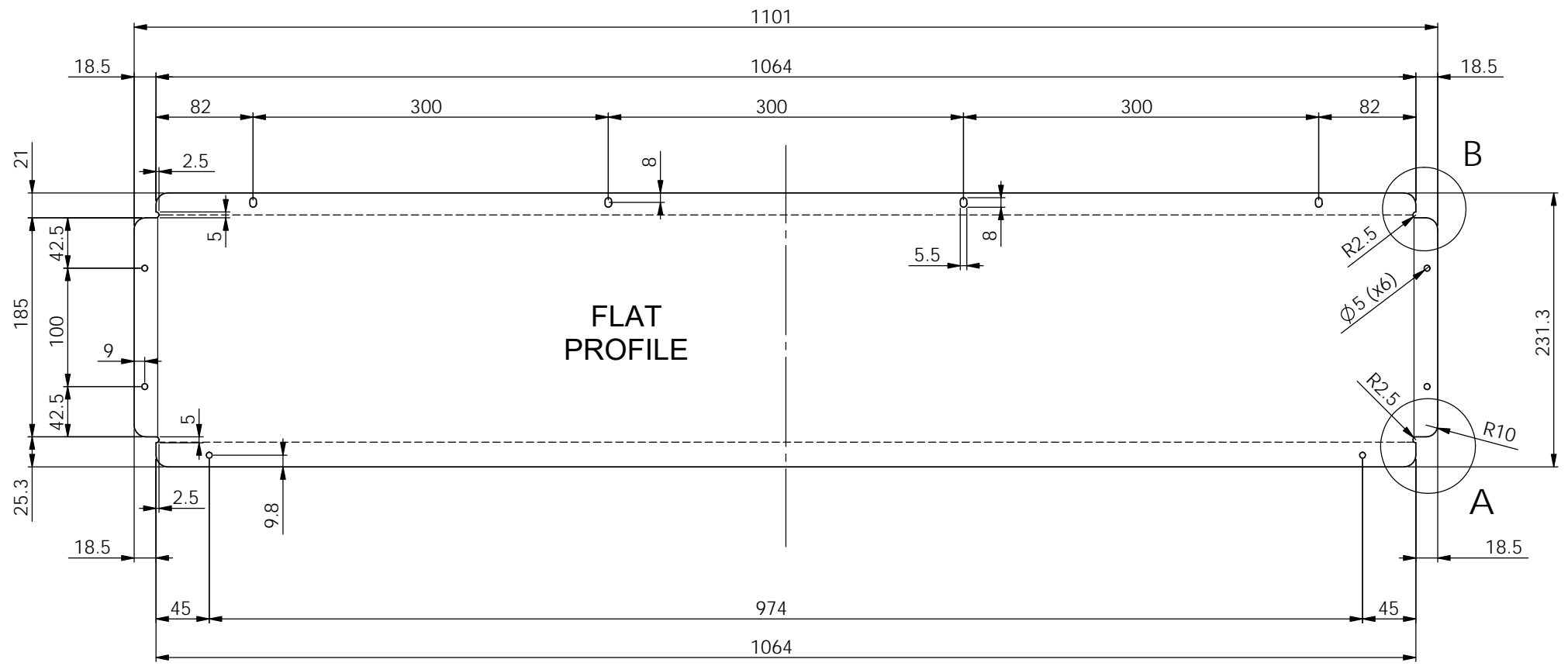
THICKNESS: 1.5 mm
 WEIGHT: 2978.25 g
 DO NOT SCALE DRAWING

MATERIAL: Cold Reduced BSEN10130
 FINISH:
 SELF COLOUR

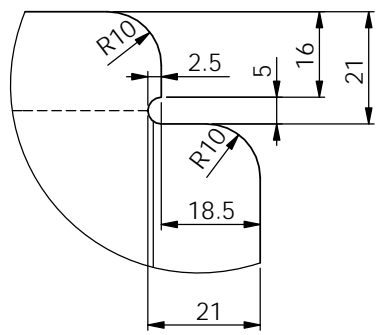


TITLE: BIO WALL BOX LOWER PLATE FOLDING 1000

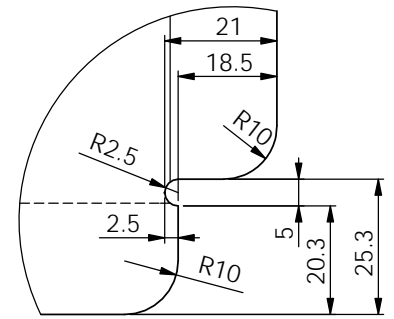
DWG NO.		3C17331		REVISION	A
DRAWN	CRG	DATE	20 January 2022 14:06:14	SHEET 1 OF 2	A3



DETAIL B
SCALE 1 : 1



DETAIL A
SCALE 1 : 1



UNLESS OTHERWISE SPECIFIED:
DIMENSIONS ARE IN MILLIMETERS
SURFACE FINISH:
TOLERANCES:
LINEAR: ± 0.2 mm
ANGULAR: $\pm 0.2^\circ$

DEBUR AND
BREAK SHARP
EDGES

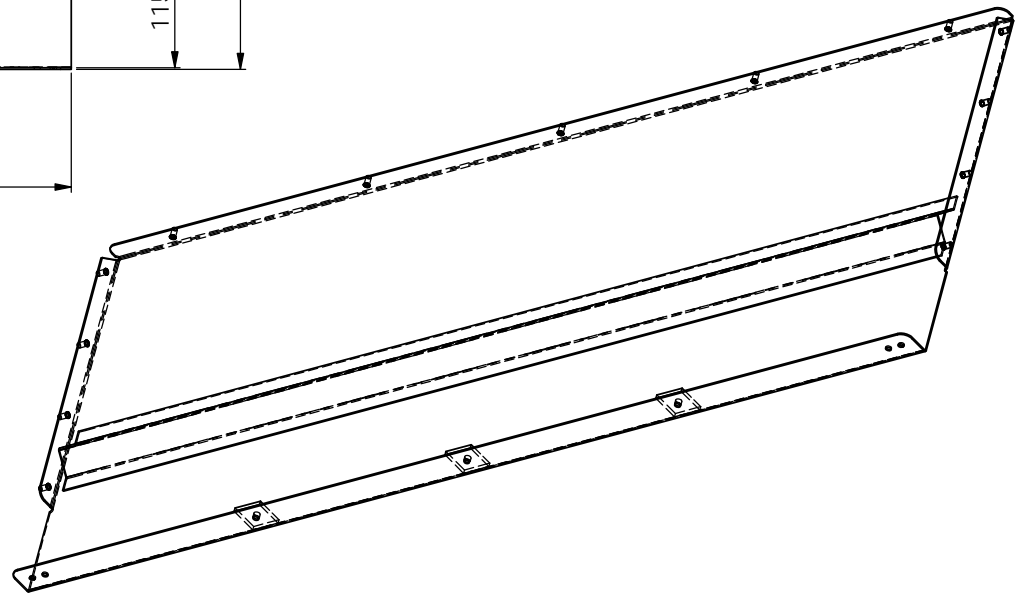
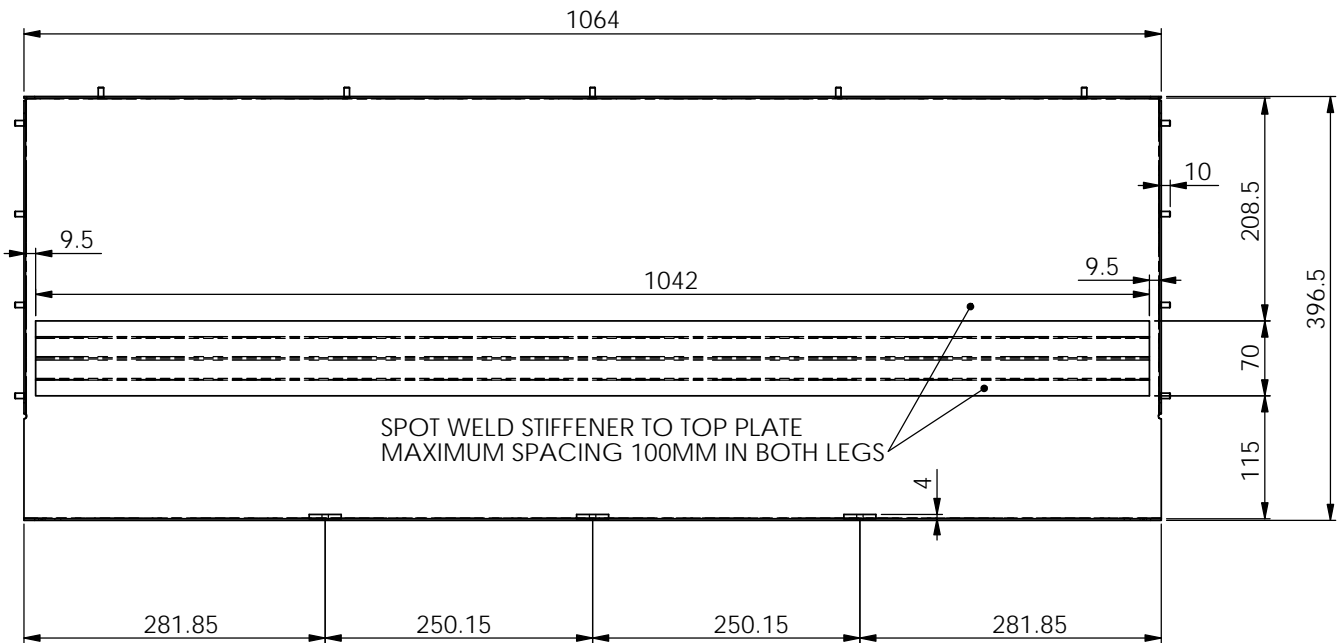
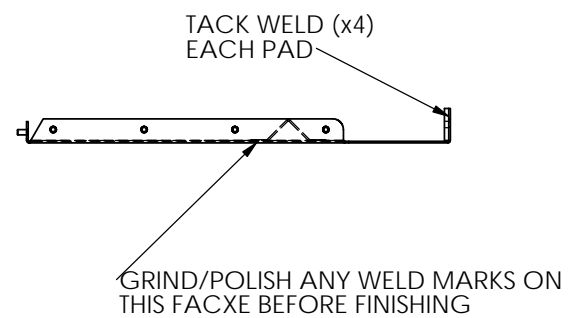
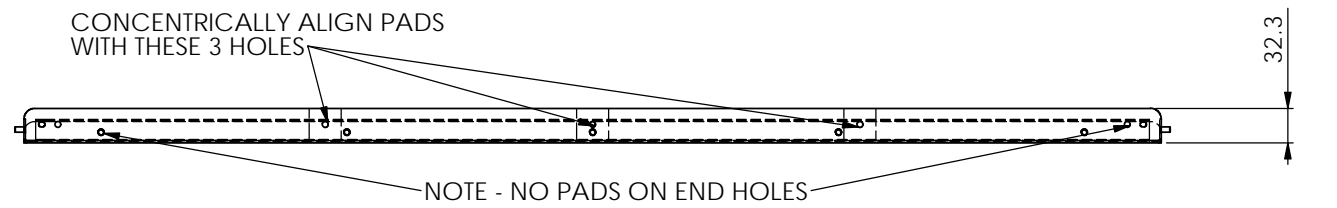
THICKNESS: 1.5 mm
WEIGHT: 2953.89 g
DO NOT SCALE DRAWING

MATERIAL: Cold Reduced BSEN10130
FINISH: SELF COLOUR



TITLE: BIO WALL BOX LOWER PLATE FOLDING 1000

DWG NO.	3C17331			REVISION	A
DRAWN	CRG	DATE	20 January 2022 14:06:14	SHEET 2 OF 2	A3



ITEM NO.	PART NUMBER	REVISION	DESCRIPTION	QTY.
1	3C17332	A	BIO WALL BOX TOP PLATE FOLDING 1000	1
2	3C16A33	A	BIO WALL SPACING PAD	3
3	3C17C33	A	BIO WALL TOP STIFFENER 1000	1
4	FHM510	n/a	M5x10 Flush Self Clinching PEM Stud	13

UNLESS OTHERWISE SPECIFIED:
 DIMENSIONS ARE IN MILLIMETERS
 SURFACE FINISH:
 TOLERANCES:
 LINEAR: ± 0.2 mm
 ANGULAR: ± 0.2 °

DEBUR AND
 BREAK SHARP
 EDGES

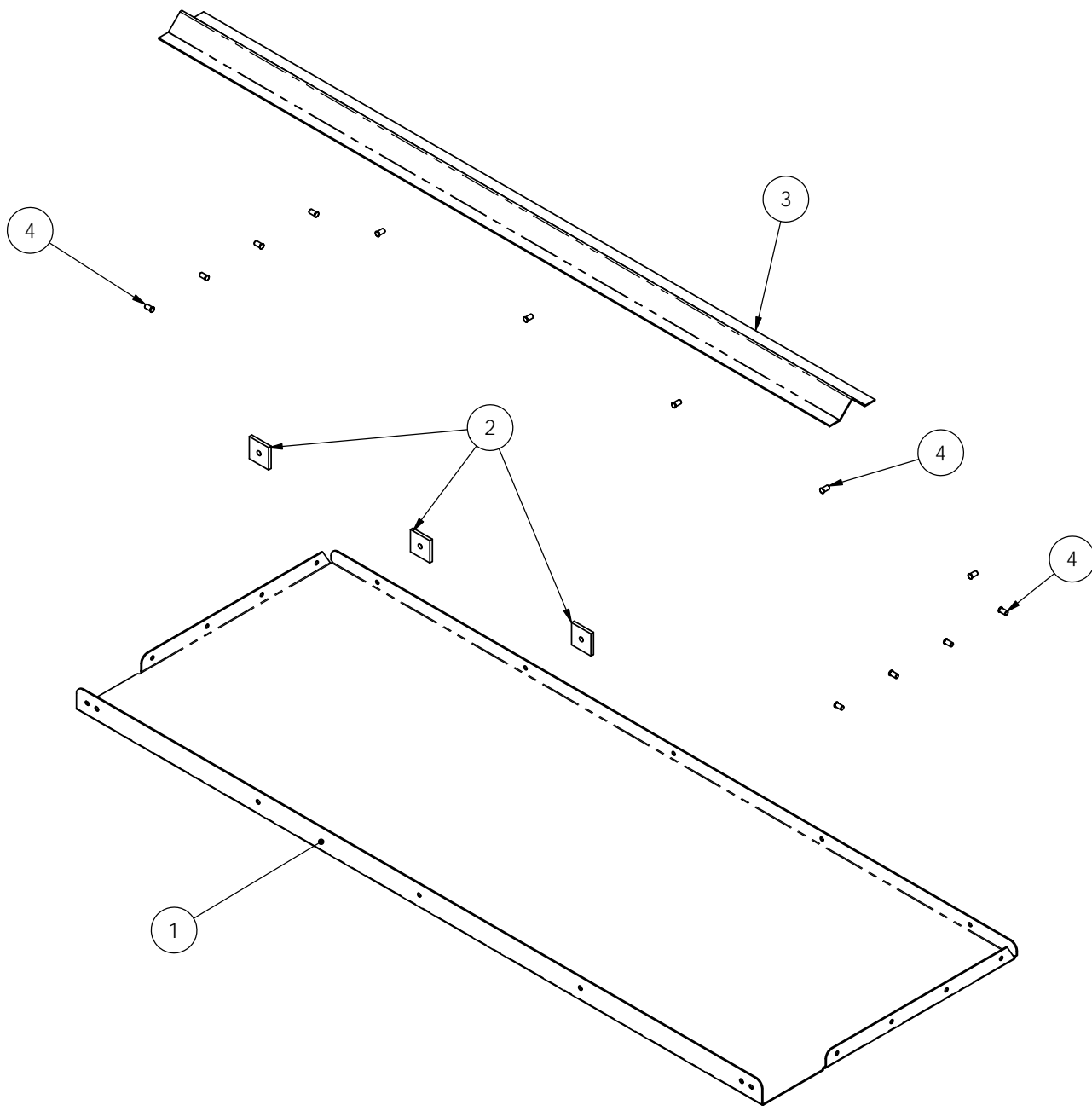
THICKNESS: mm
 WEIGHT: 6807.19 g
 DO NOT SCALE DRAWING

MATERIAL: SEE BOM
 FINISH:
 AS PER ORDER



TITLE:
 BIO WALL BOX TOP PLATE SUB-ASSEMBLY 1000

DWG NO.	3A17332	REVISION	A
DRAWN	CRG	DATE	20 January 2022 14:21:26
SHEET	1 OF 2	SCALE	1:5
		SHEET	A3



UNLESS OTHERWISE SPECIFIED:
 DIMENSIONS ARE IN MILLIMETERS
 SURFACE FINISH:
 TOLERANCES:
 LINEAR: ± 0.2 mm
 ANGULAR: ± 0.2 °

DEBUR AND
 BREAK SHARP
 EDGES

THICKNESS: mm
 WEIGHT: 6807.19 g
 DO NOT SCALE DRAWING

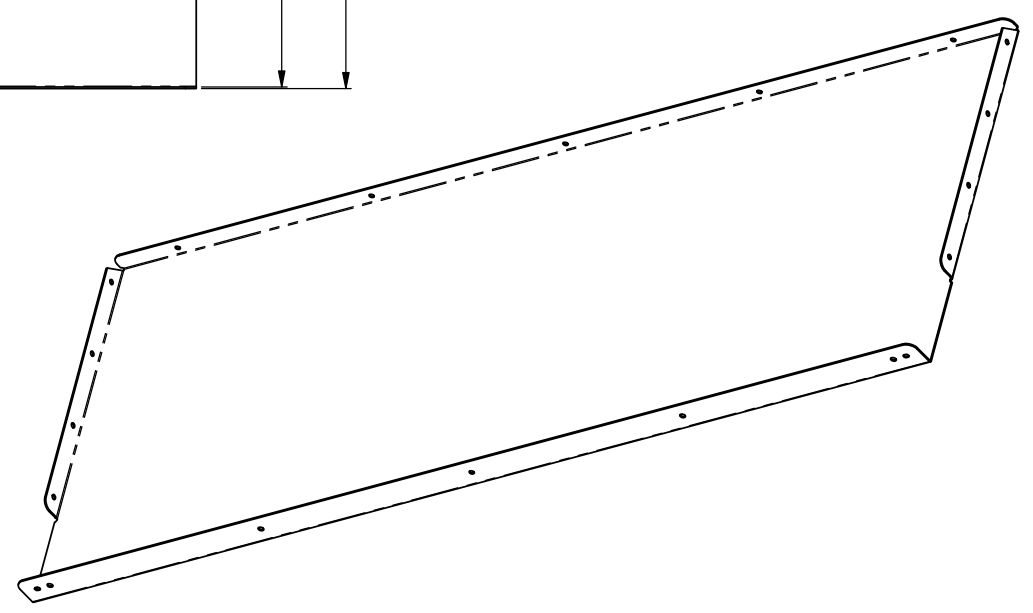
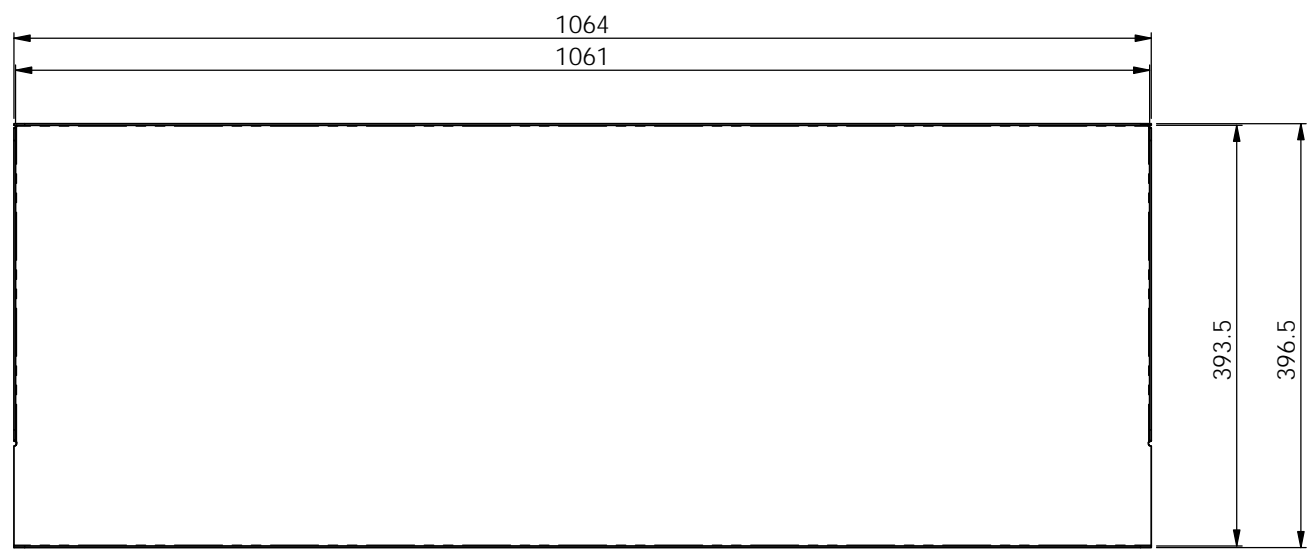
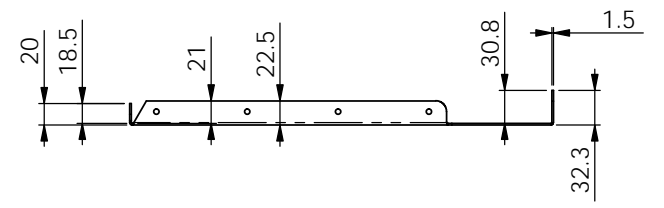
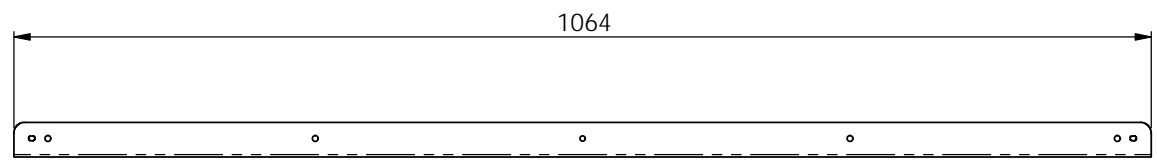
MATERIAL: SEE BOM
 FINISH:
 AS PER ORDER



TITLE: BIO WALL BOX TOP PLATE SUB-ASSEMBLY 1000

DWG NO.	3A17332
DRAWN	CRG
DATE	20 January 2022 14:21:26
SHEET	2 OF 2

REVISION	A
SCALE	1:5
A3	



UNLESS OTHERWISE SPECIFIED:
 DIMENSIONS ARE IN MILLIMETERS
 SURFACE FINISH:
 TOLERANCES:
 LINEAR: ± 0.2 mm
 ANGULAR: ± 0.2 °

DEBUR AND
 BREAK SHARP
 EDGES

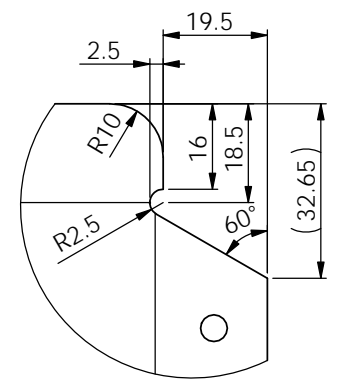
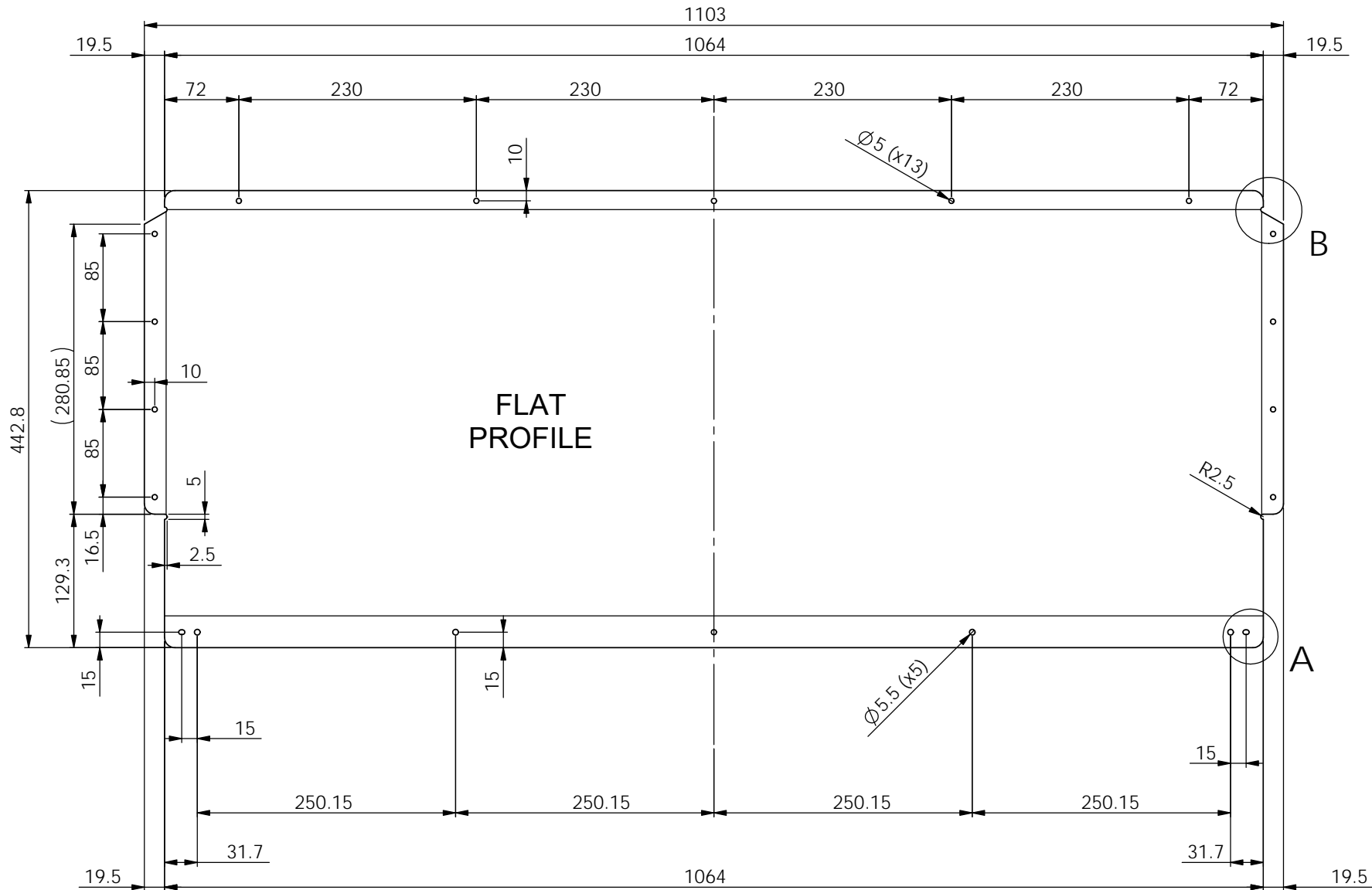
THICKNESS: 1.5 mm
 WEIGHT: 5662.48 g
 DO NOT SCALE DRAWING

MATERIAL: Cold Reduced BSEN10130
 FINISH:
 SELF COLOUR

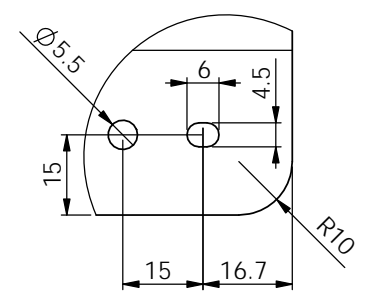


TITLE: BIO WALL BOX TOP PLATE FOLDING 1000

DWG NO.	3C17332	REVISION	A
DRAWN	CRG	DATE	20 January 2022 14:13:47
SHEET 1 OF 2		SCALE: 1:5	
		A3	



DETAIL B
SCALE 1 : 1



DETAIL A
SCALE 1 : 1

UNLESS OTHERWISE SPECIFIED:
DIMENSIONS ARE IN MILLIMETERS
SURFACE FINISH:
TOLERANCES:
LINEAR: ± 0.2 mm
ANGULAR: ± 0.2 °

DEBUR AND
BREAK SHARP
EDGES

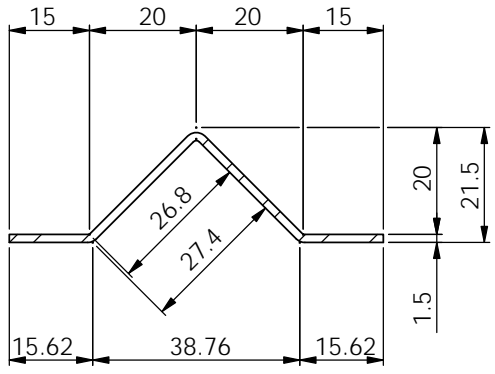
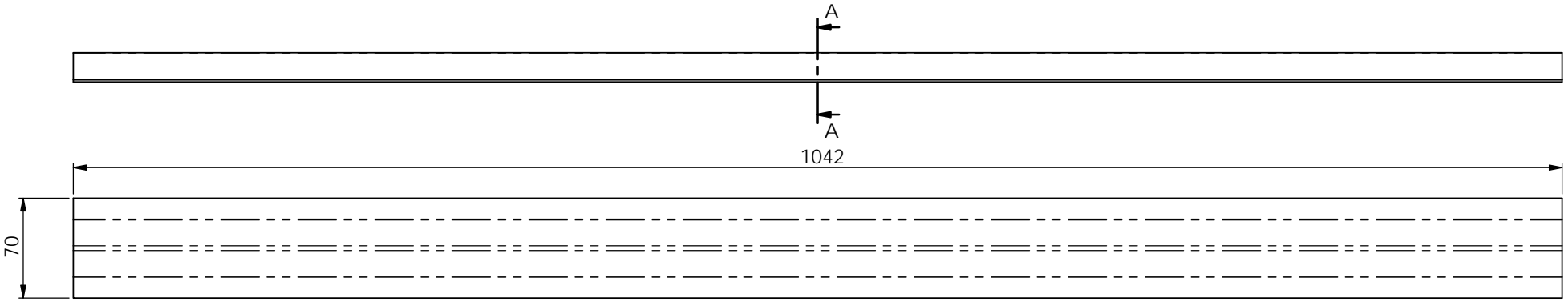
THICKNESS: 1.5 mm
WEIGHT: 5636.22 g
DO NOT SCALE DRAWING

MATERIAL: Cold Reduced BSEN10130
FINISH:
SELF COLOUR

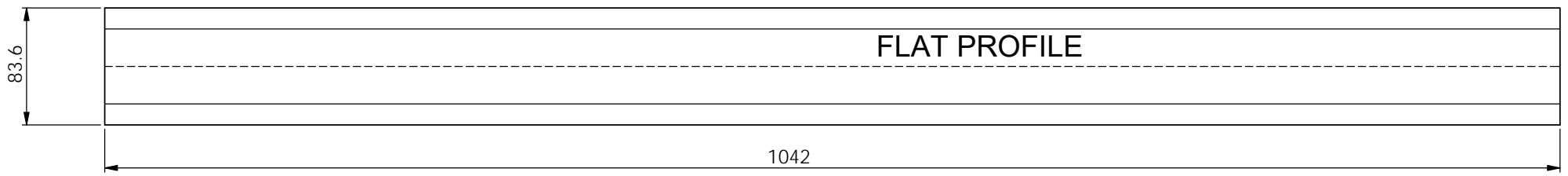
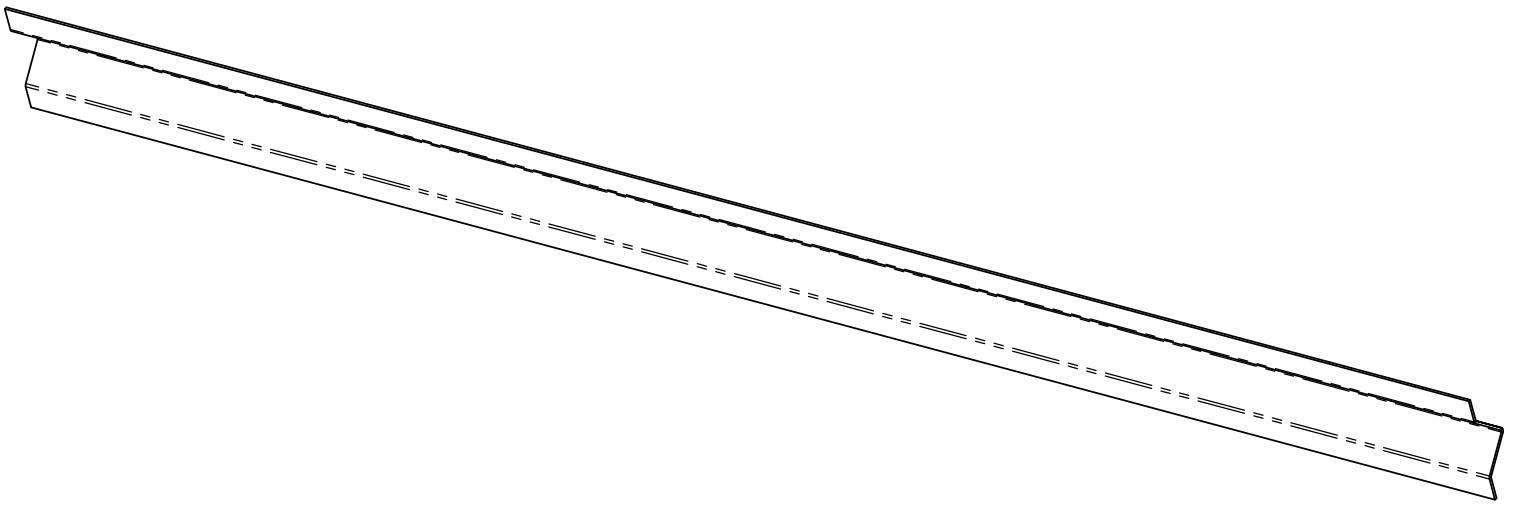


TITLE: BIO WALL BOX TOP PLATE FOLDING 1000

DWG NO.		3C17332		REVISION	A
DRAWN	CRG	DATE	20 January 2022 14:13:47	SHEET 2 OF 2	A3



SECTION A-A
SCALE 1 : 1



UNLESS OTHERWISE SPECIFIED:
DIMENSIONS ARE IN MILLIMETERS
SURFACE FINISH:
TOLERANCES:
LINEAR: ± 0.2 mm
ANGULAR: ± 0.2 °

DEBUR AND
BREAK SHARP
EDGES

THICKNESS: 1.5 mm
WEIGHT: 1042.52 g
DO NOT SCALE DRAWING

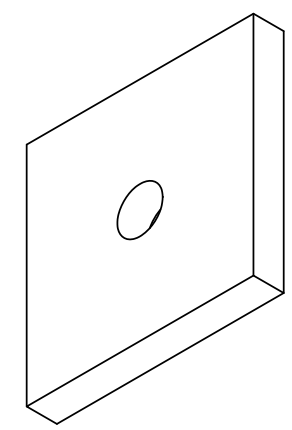
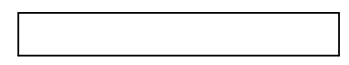
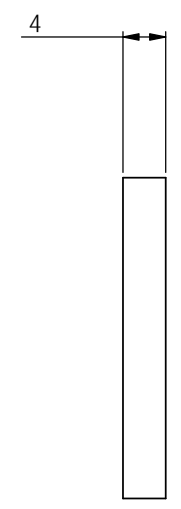
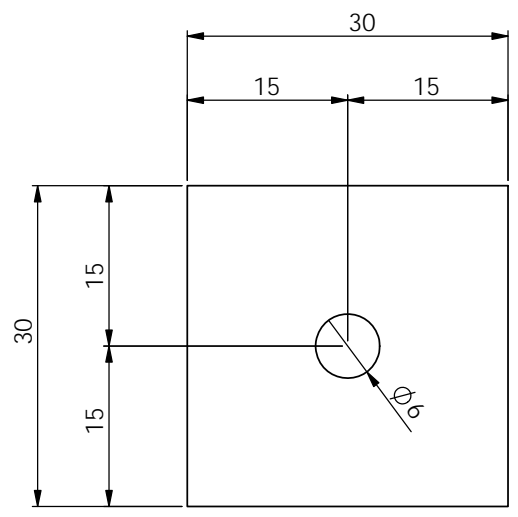
MATERIAL: Cold Reduced BSEN10130
FINISH:
SELF COLOUR



TITLE:
BIO WALL TOP STIFFENER 1000

DWG NO.	3C17C33	
DRAWN	CRG	DATE 20 January 2022 16:15:59
SHEET 1 OF 1		PRINT DATE: 25/01/2022

REVISION
A
SCALE:1:3
A3



UNLESS OTHERWISE SPECIFIED:
 DIMENSIONS ARE IN MILLIMETERS
 SURFACE FINISH:
 TOLERANCES:
 LINEAR: ± 0.2 mm
 ANGULAR: ± 0.2 °

DEBUR AND
 BREAK SHARP
 EDGES

THICKNESS: 4 mm
 WEIGHT: 27.20 g
 DO NOT SCALE DRAWING

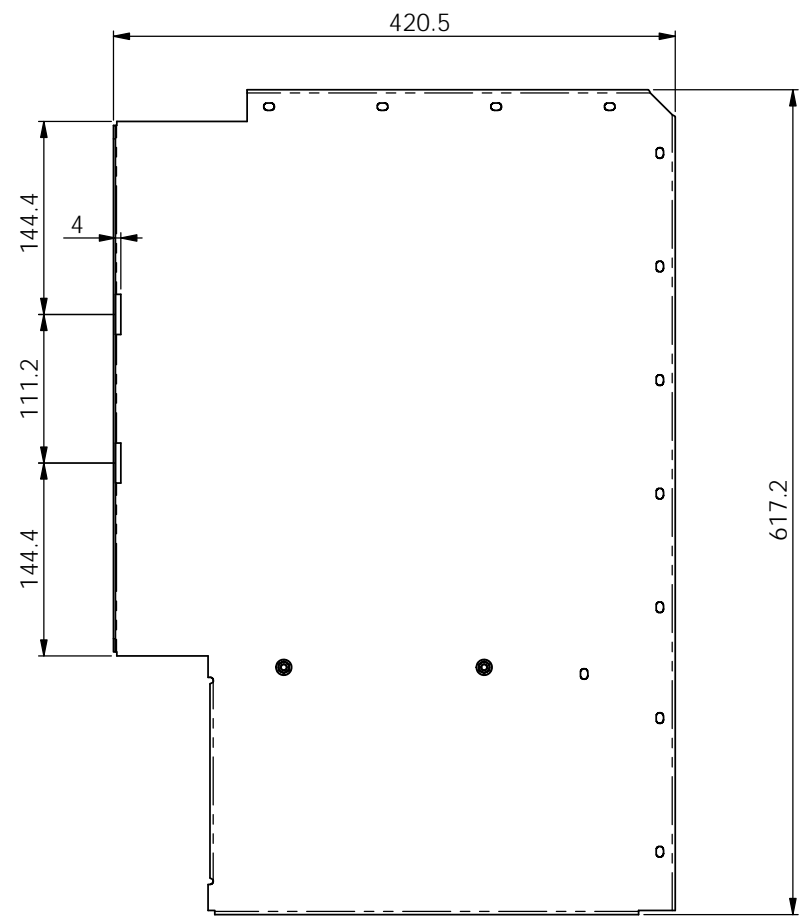
MATERIAL: Cold Reduced BSEN10130
 FINISH:
 SELF COLOUR



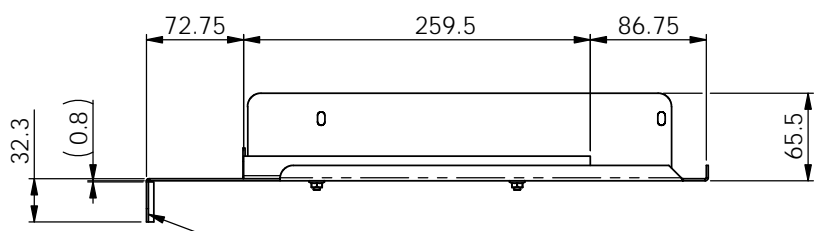
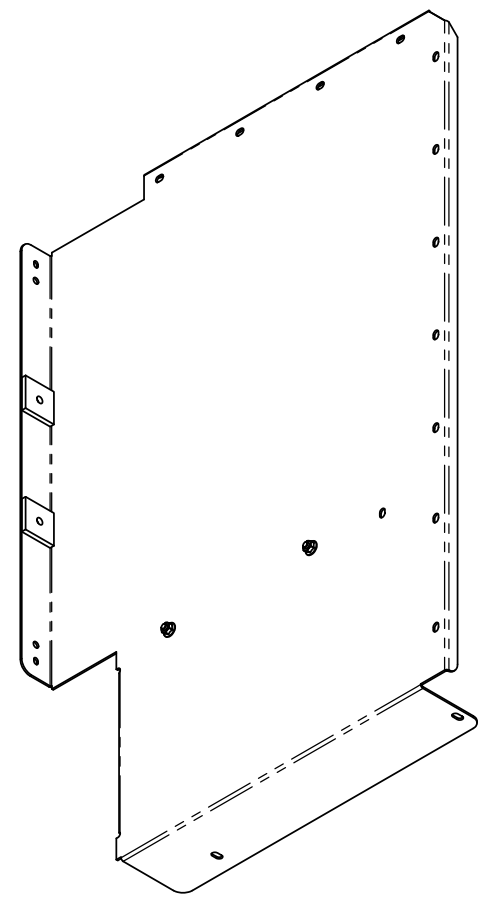
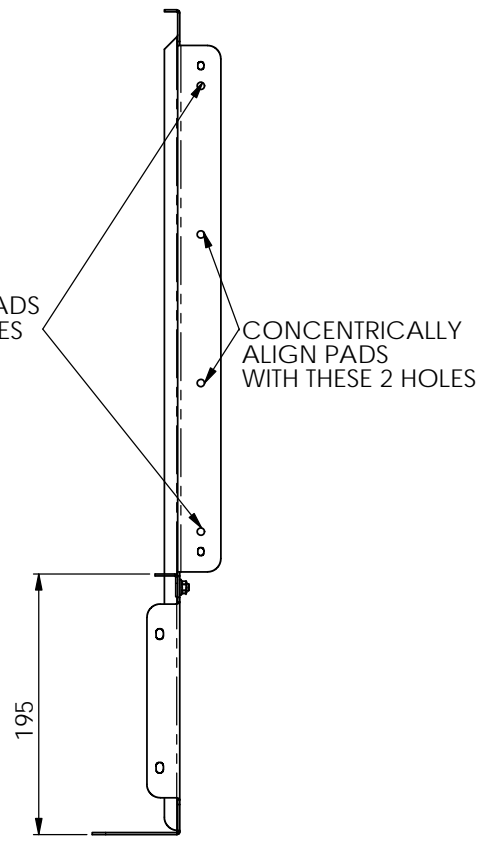
TITLE: BIO WALL SPACING PAD
 DWG NO. 3C16A33

DATE 20 January 2022 13:41:11
 SHEET 1 OF 1

REVISION A
 SCALE:2:1
 A3



NOTE - NO PADS ON END HOLES



TACK WELD (x4)
EACH PAD

ITEM NO.	PART NUMBER	REVISION	DESCRIPTION	QTY.
1	3C1733R	A	BIO WALL BOX END PLATE FOLDING RH	1
2	3C16A33	A	BIO WALL SPACING PAD	2
3	3A17335	A	BIO WALL BOX END ANGLE SUB-ASSEMBLY	1
4	275-535	n/a	M5 SERATTED HEX FLANGE NUT DIN 6923 ZINC PLATED	2

UNLESS OTHERWISE SPECIFIED:
DIMENSIONS ARE IN MILLIMETERS
SURFACE FINISH:
TOLERANCES:
LINEAR: ± 0.2 mm
ANGULAR: ± 0.2°

DEBUR AND
BREAK SHARP
EDGES

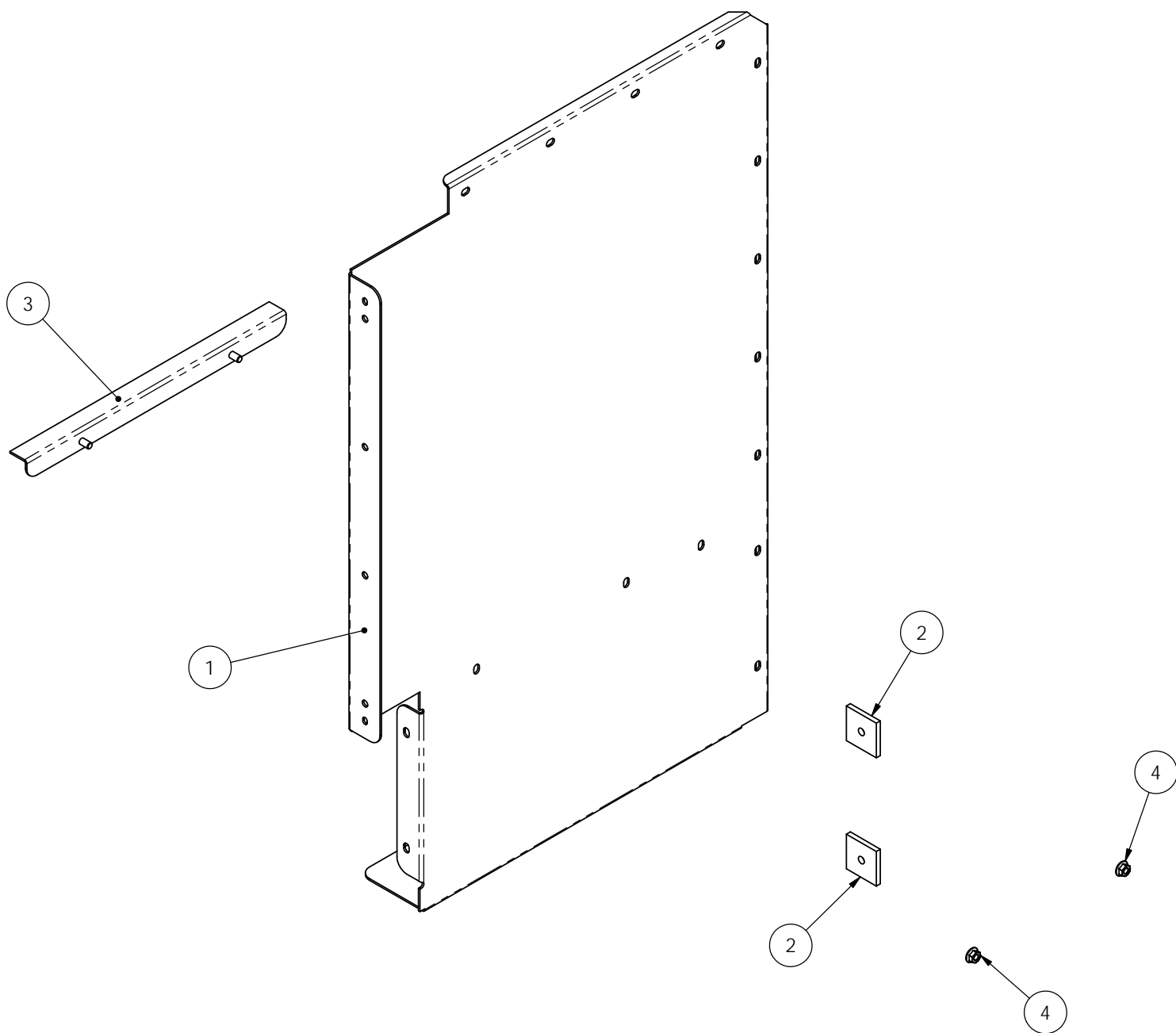
THICKNESS: mm
WEIGHT: 3495.83 g
DO NOT SCALE DRAWING

MATERIAL: SEE BOM
FINISH:
AS PER ORDER



TITLE: BIO WALL BOX END PLATE SUB-ASSEMBLY RH

DWG NO.	3A1733R	REVISION	A
DRAWN	CRG	DATE	20 January 2022 13:43:44
SHEET	1 OF 2	SCALE	1:4
PRINT DATE	26/01/2022		



UNLESS OTHERWISE SPECIFIED:
 DIMENSIONS ARE IN MILLIMETERS
 SURFACE FINISH:
 TOLERANCES:
 LINEAR: ± 0.2 mm
 ANGULAR: ± 0.2 °

DEBUR AND
 BREAK SHARP
 EDGES

THICKNESS: mm
 WEIGHT: 3495.83 g
 DO NOT SCALE DRAWING

MATERIAL: SEE BOM
 FINISH:
 AS PER ORDER



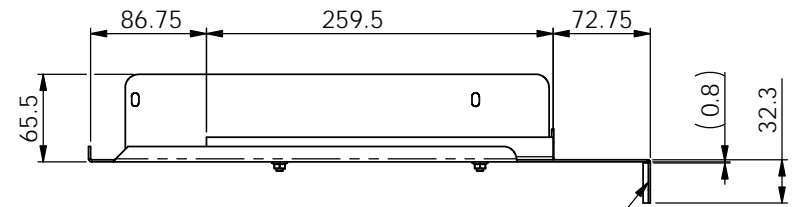
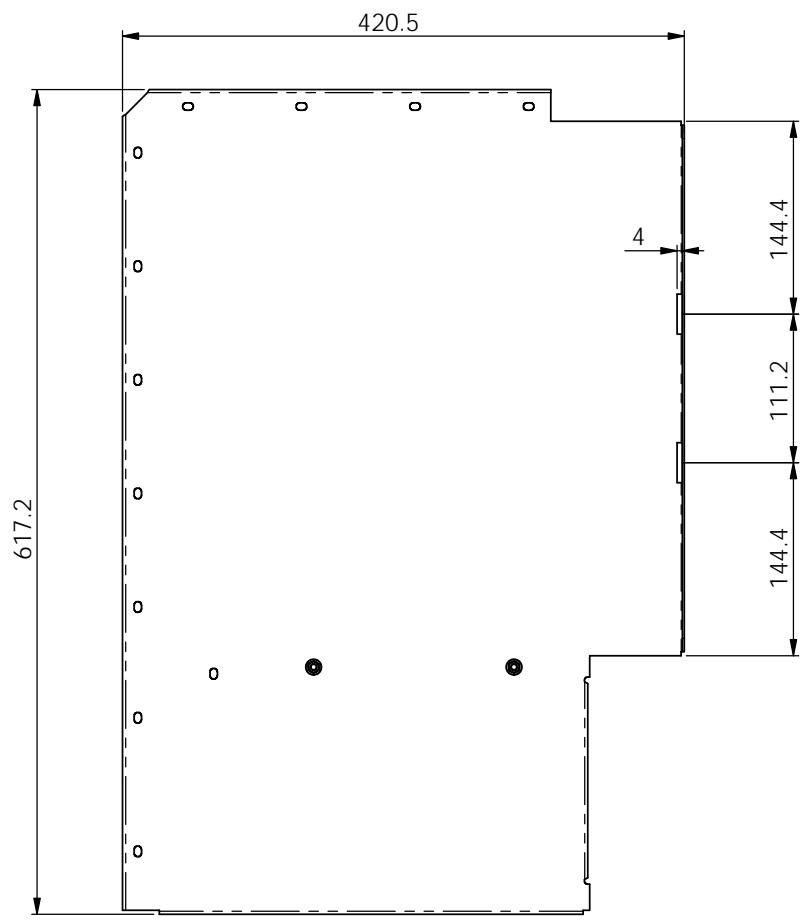
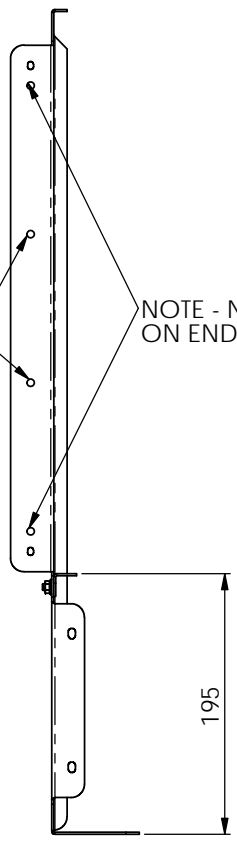
TITLE: **BIO WALL BOX END PLATE SUB-ASSEMBLY RH**

DWG NO. **3A1733R**
 DRAWN CRG DATE 20 January 2022 13:43:44 SHEET 2 OF 2

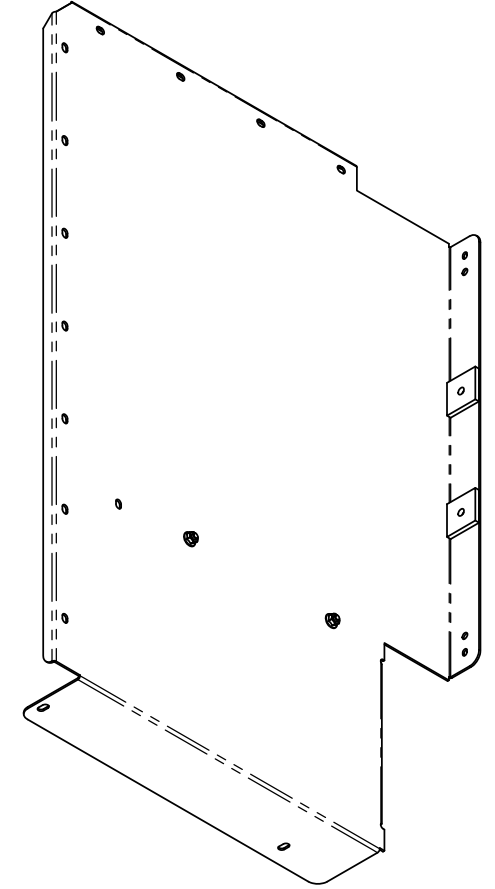
REVISION **A**
 SCALE: 1:3
 A3

CONCENTRICALLY ALIGN PADS WITH THESE 2 HOLES

NOTE - NO PADS ON END HOLES



TACK WELD (x4)
EACH PAD



ITEM NO.	PART NUMBER	REVISION	DESCRIPTION	QTY.
1	3C1733L	A	BIO WALL BOX END PLATE FOLDING LH	1
2	3C16A33	A	BIO WALL SPACING PAD	2
3	3A17335	A	BIO WALL BOX END ANGLE SUB-ASSEMBLY	1
4	275-535	n/a	M5 SERATTED HEX FLANGE NUT DIN 6923 ZINC PLATED	2

UNLESS OTHERWISE SPECIFIED:
DIMENSIONS ARE IN MILLIMETERS
SURFACE FINISH:
TOLERANCES:
LINEAR: ± 0.2 mm
ANGULAR: ± 0.2 °

DEBUR AND
BREAK SHARP
EDGES

THICKNESS: mm
WEIGHT: 3495.82 g
DO NOT SCALE DRAWING

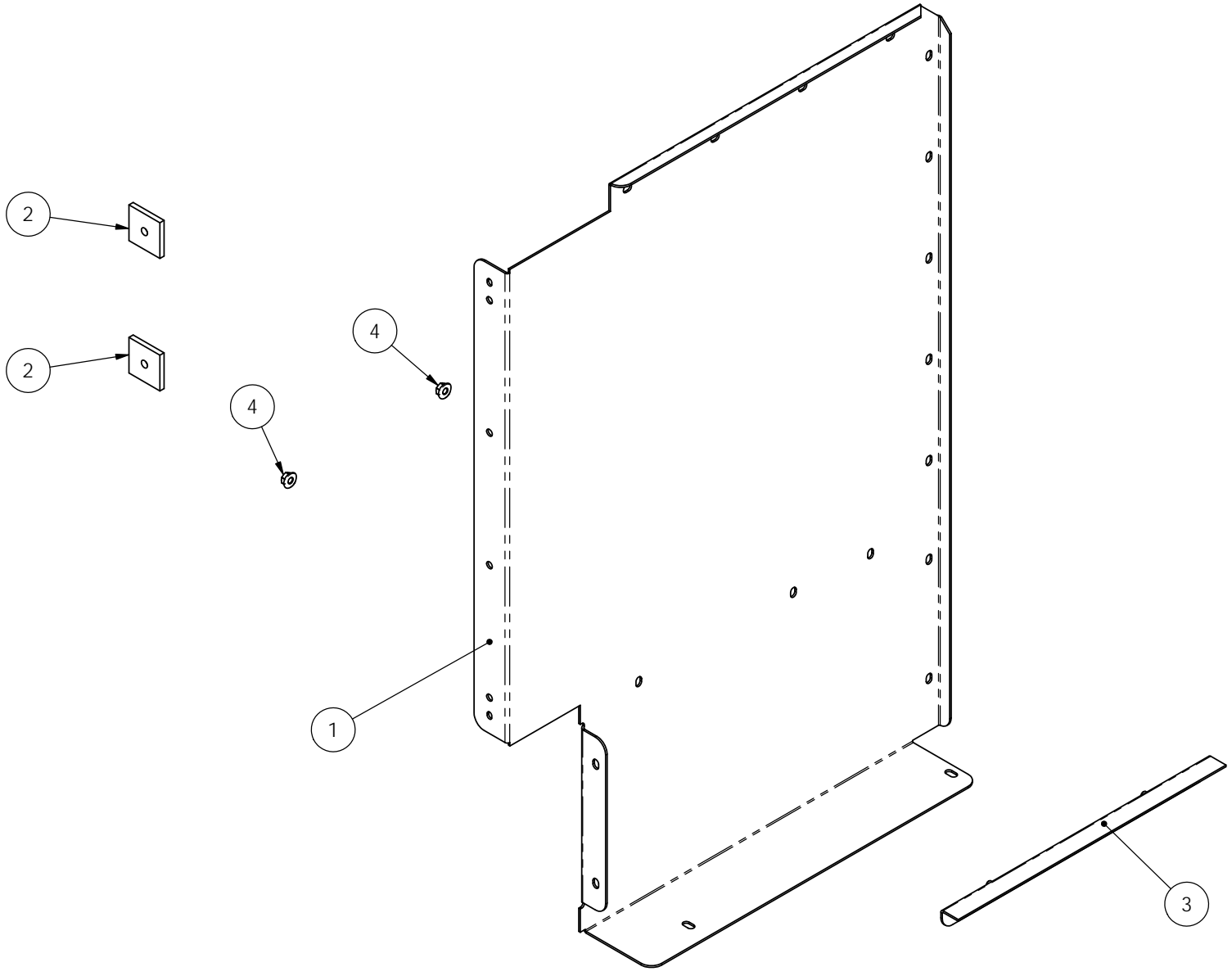
MATERIAL: SEE BOM
FINISH:
AS PER ORDER



TITLE:
BIO WALL BOX END PLATE SUB-ASSEMBLY LH

DWG NO.
3A1733L
DRAWN CRG DATE 21 January 2022 11:42:34 SHEET 1 OF 2

REVISION
A
SCALE:1:4
A3



UNLESS OTHERWISE SPECIFIED:
 DIMENSIONS ARE IN MILLIMETERS
 SURFACE FINISH:
 TOLERANCES:
 LINEAR: ± 0.2 mm
 ANGULAR: ± 0.2 °

DEBUR AND
 BREAK SHARP
 EDGES

THICKNESS: mm
 WEIGHT: 3495.82 g
 DO NOT SCALE DRAWING

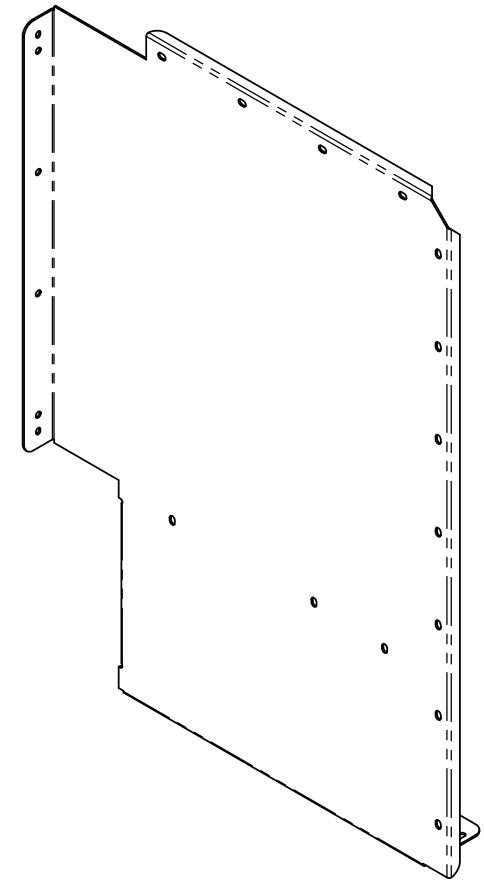
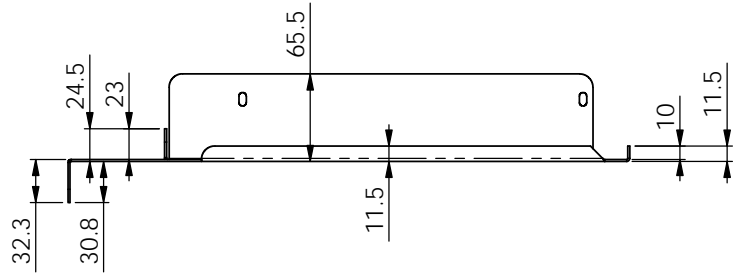
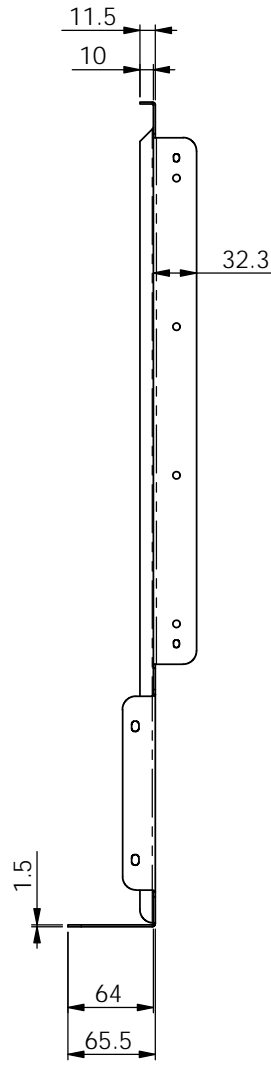
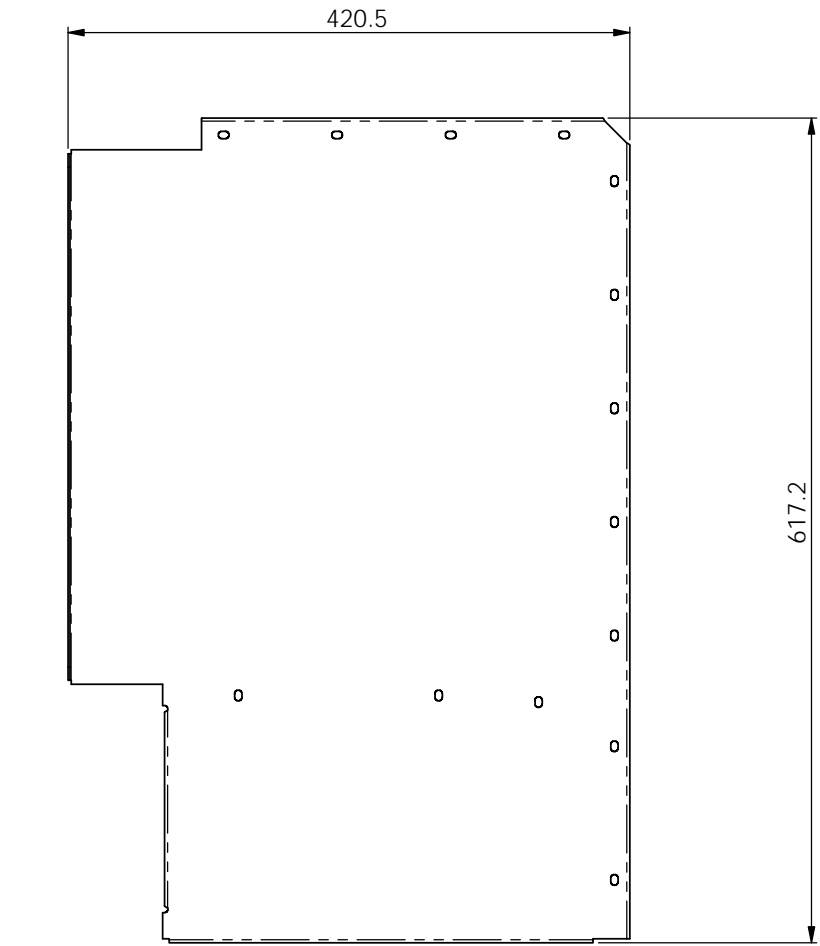
MATERIAL: SEE BOM
 FINISH:
 AS PER ORDER



TITLE: BIO WALL BOX END PLATE SUB-ASSEMBLY LH
 DWG NO. 3A1733L

REVISION A
 SCALE 1:3
 DRAWN CRG DATE 21 January 2022 11:42:34 SHEET 2 OF 2 A3

PRINT DATE :26/01/2022



UNLESS OTHERWISE SPECIFIED:
 DIMENSIONS ARE IN MILLIMETERS
 SURFACE FINISH:
 TOLERANCES:
 LINEAR: ± 0.2 mm
 ANGULAR: ± 0.2 °

DEBUR AND
 BREAK SHARP
 EDGES

THICKNESS: 1.5 mm
 WEIGHT: 3338.35 g
 DO NOT SCALE DRAWING

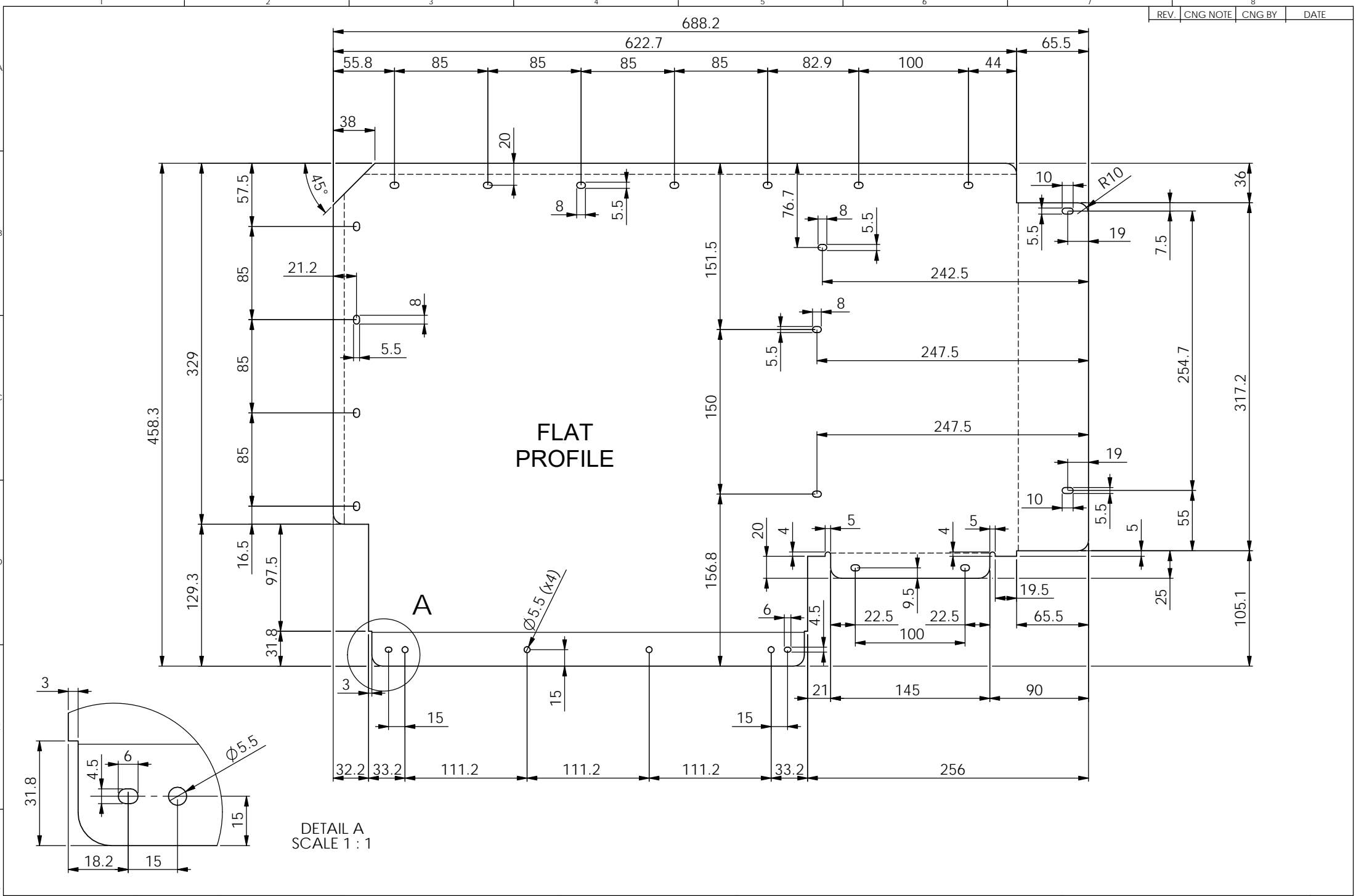
MATERIAL: Cold Reduced BSEN10130
 FINISH:
 SELF COLOUR



TITLE:
 BIO WALL BOX END PLATE FOLDING
 PART No. 3C1733R - AS RH - AS DRAWN
 PART No. 3C1733L - AS LH - FOLD OPPOSITE HAND

DWG NO.
3C1733R
 DRAWN CRG DATE 20 January 2022 13:21:33 SHEET 1 OF 2

REVISION
A
 SCALE:1:4
A3



DETAIL A
SCALE 1 : 1

UNLESS OTHERWISE SPECIFIED:
DIMENSIONS ARE IN MILLIMETERS
SURFACE FINISH:
TOLERANCES:
LINEAR: ± 0.2 mm
ANGULAR: ± 0.2 °

DEBUR AND
BREAK SHARP
EDGES

THICKNESS: 1.5 mm
WEIGHT: 3321.29 g
DO NOT SCALE DRAWING

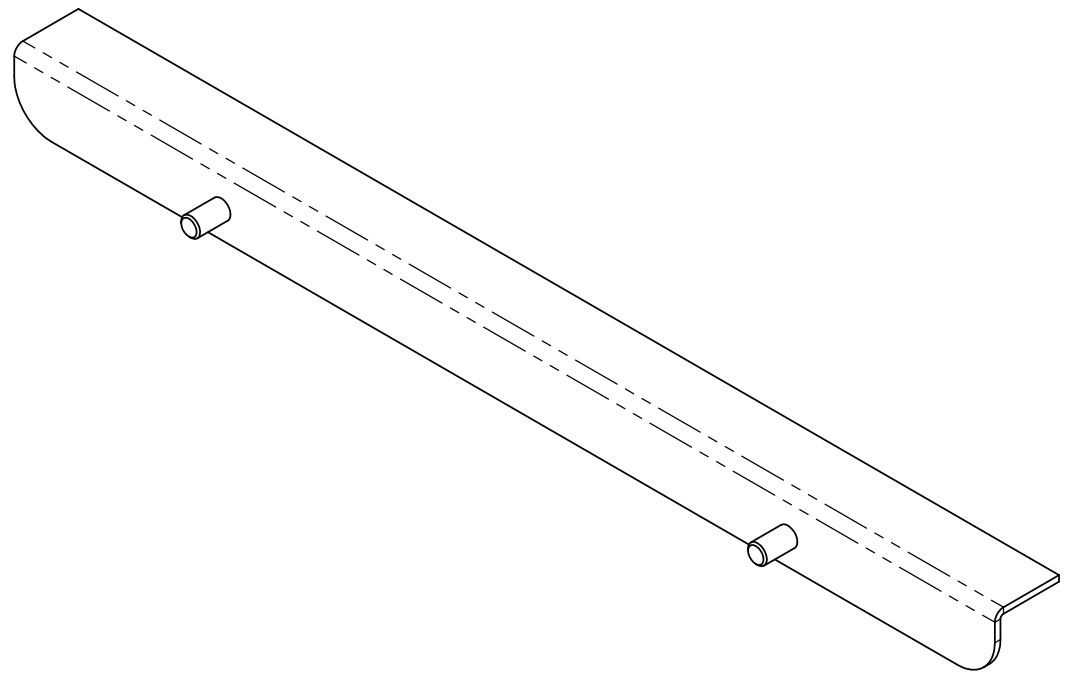
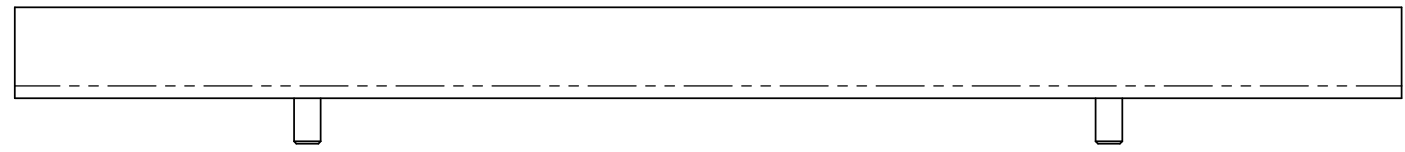
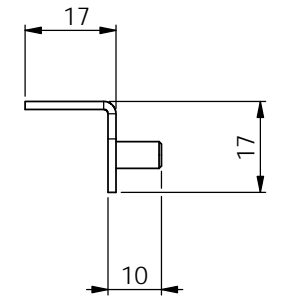
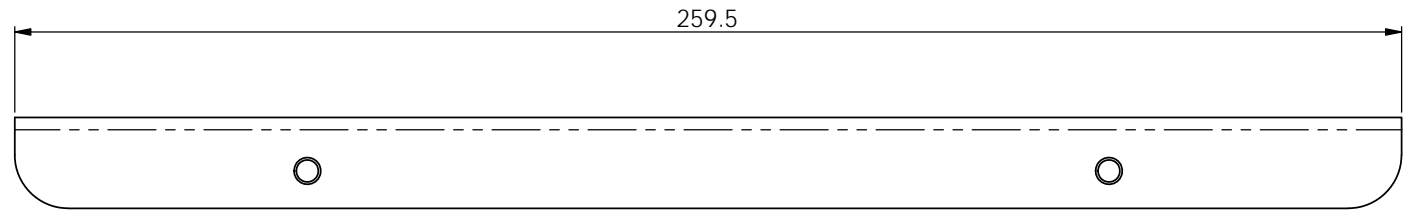
MATERIAL: Cold Reduced BSEN10130
FINISH:
SELF COLOUR



TITLE: BIO WALL BOX END PLATE FOLDING

DWG NO. 3C1733R
DRAWN CRG DATE 20 January 2022 13:21:33 SHEET 2 OF 2

REVISION A
SCALE: 1:3
A3



ITEM NO.	PART NUMBER	REVISION	DESCRIPTION	QTY.
1	3C17335	A	BIO WALL BOX END ANGLE FOLDING	1
2	FHM510	n/a	M5x10 Flush Self Clinching PEM Stud	2

UNLESS OTHERWISE SPECIFIED:
 DIMENSIONS ARE IN MILLIMETERS
 SURFACE FINISH:
 TOLERANCES:
 LINEAR: ± 0.2 mm
 ANGULAR: ± 0.2 °

DEBUR AND
 BREAK SHARP
 EDGES

THICKNESS: mm
 WEIGHT: 98.86 g
 DO NOT SCALE DRAWING

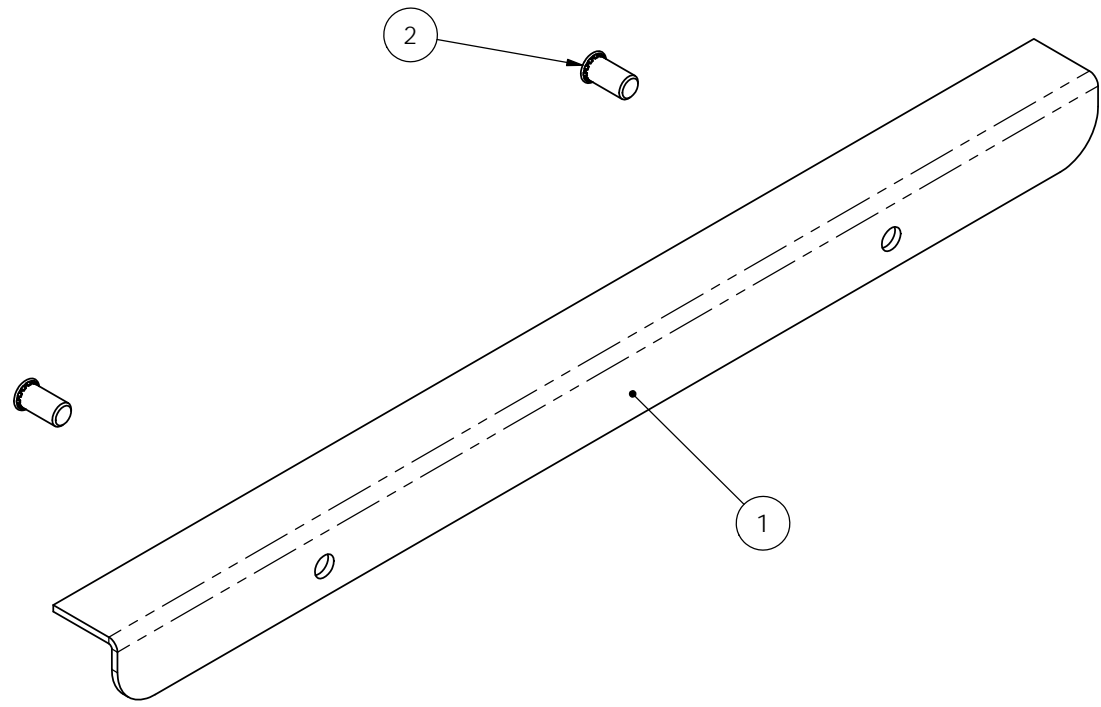
MATERIAL: SEE BOM
 FINISH:
 AS PER ORDER



TITLE: BIO WALL BOX END ANGLE SUB-ASSEMBLY

DWG NO. **3A17335**
 DRAWN CRG DATE 24 January 2022 09:48:54 SHEET 1 OF 2

REVISION **A**
 SCALE: 1:1
 A3



UNLESS OTHERWISE SPECIFIED:
 DIMENSIONS ARE IN MILLIMETERS
 SURFACE FINISH:
 TOLERANCES:
 LINEAR: ± 0.2 mm
 ANGULAR: ± 0.2 °

DEBUR AND
 BREAK SHARP
 EDGES

THICKNESS: mm
 WEIGHT: 98.86 g
 DO NOT SCALE DRAWING

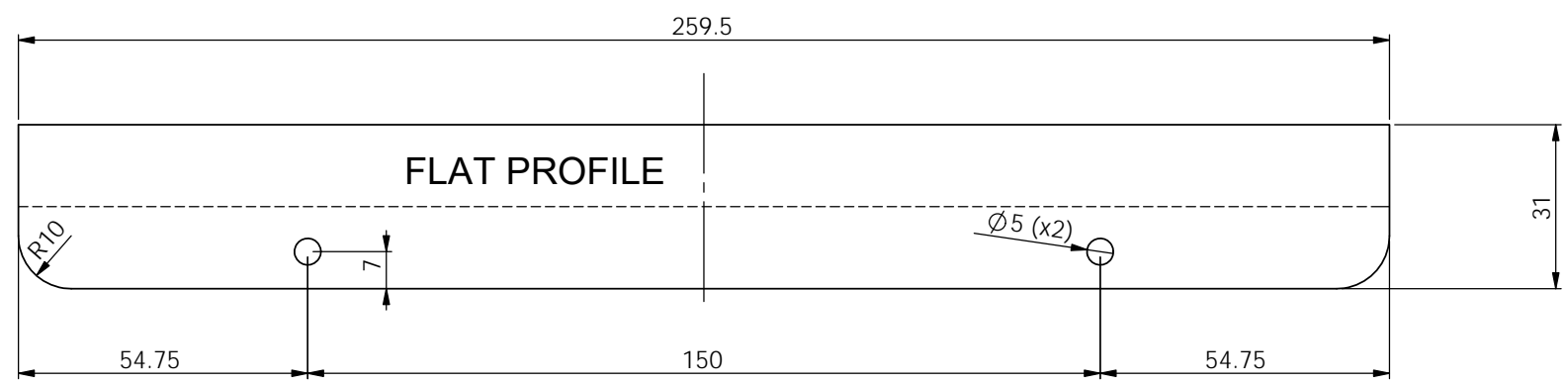
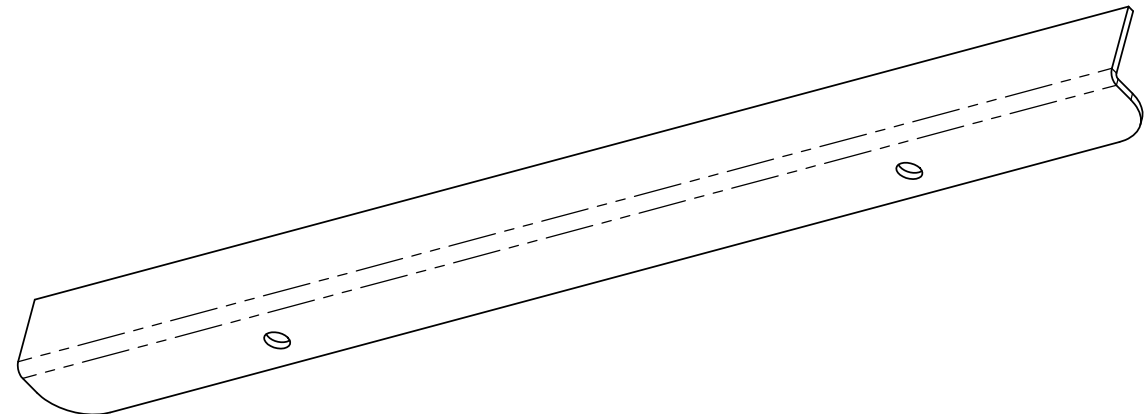
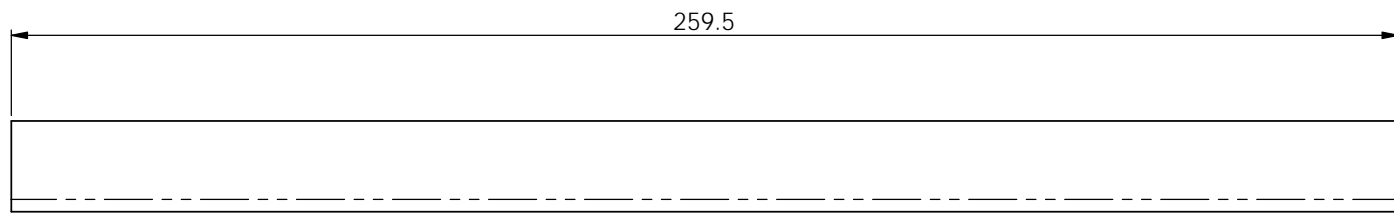
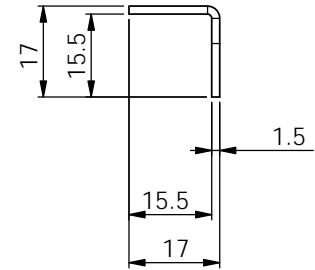
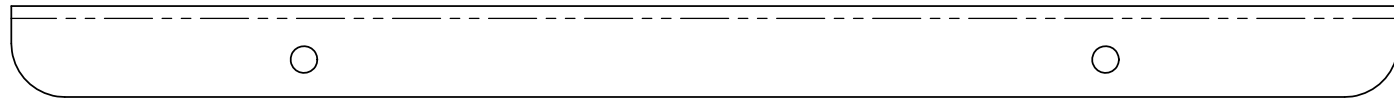
MATERIAL: SEE BOM
 FINISH:
 AS PER ORDER



TITLE: **BIO WALL BOX END ANGLE SUB-ASSEMBLY**

DWG NO. **3A17335**
 DRAWN CRG DATE 24 January 2022 09:48:54 SHEET 2 OF 2

REVISION **A**
 SCALE: 1:1
A3



UNLESS OTHERWISE SPECIFIED:
 DIMENSIONS ARE IN MILLIMETERS
 SURFACE FINISH:
 TOLERANCES:
 LINEAR: ± 0.2 mm
 ANGULAR: ± 0.2 °

DEBUR AND
 BREAK SHARP
 EDGES

THICKNESS: 1.5 mm
 WEIGHT: 95.69 g
 DO NOT SCALE DRAWING

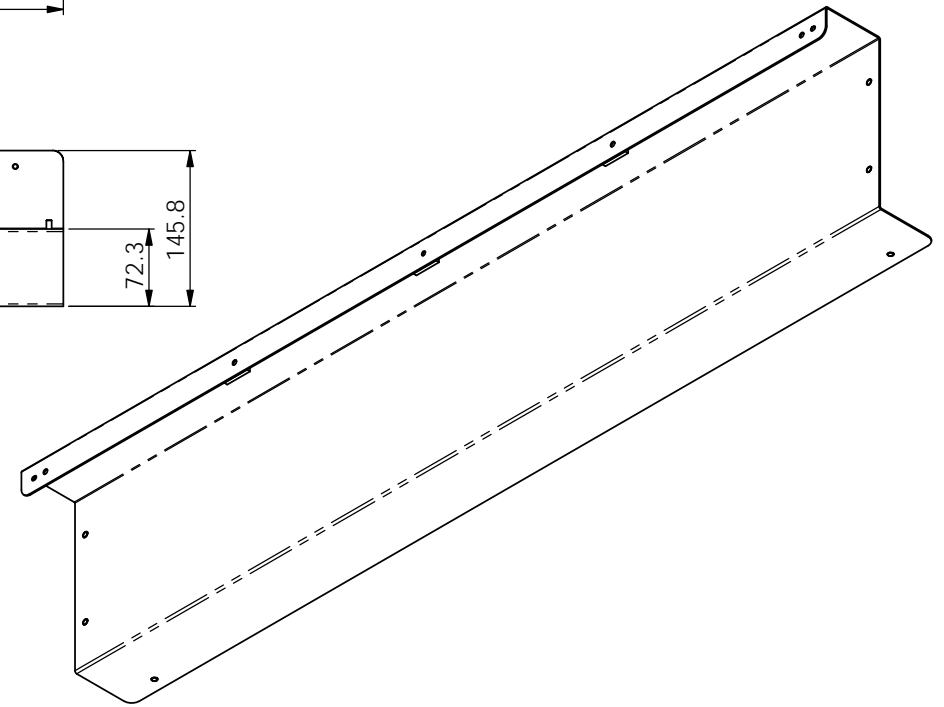
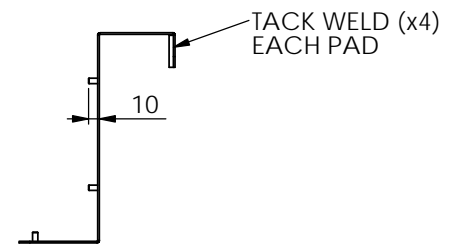
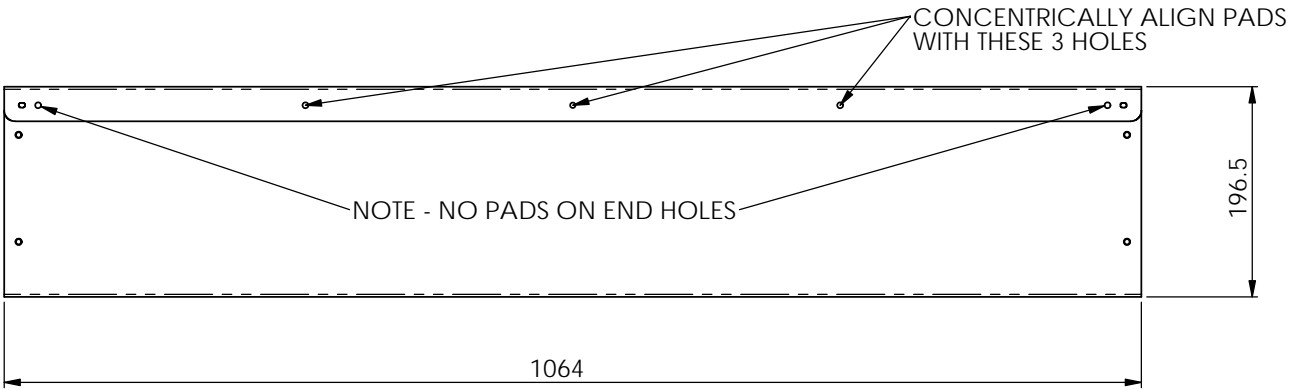
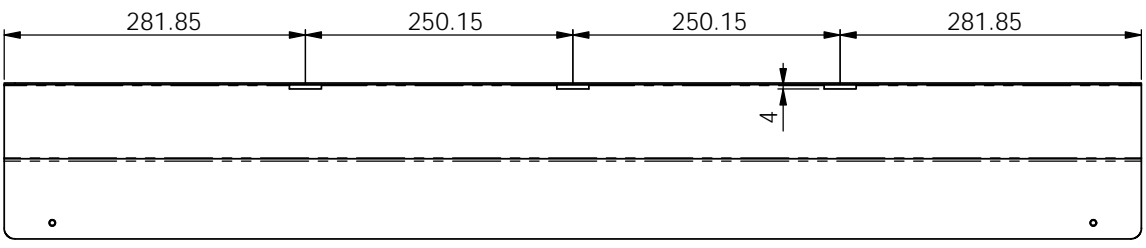
MATERIAL: Cold Reduced BSEN10130
 FINISH:
 SELF COLOUR



TITLE: BIO WALL BOX END ANGLE FOLDING

DWG NO. 3C17335
 DRAWN CRG DATE 20 January 2022 15:53:13 SHEET 1 OF 1

REVISION A
 SCALE: 1:1
 A3



ITEM NO.	PART NUMBER	REVISION	DESCRIPTION	QTY.
1	3C17334	A	BIO WALL BOX FRONT PLATE FOLDING 1000	1
2	3C16A33	A	BIO WALL SPACING PAD	3
3	FHM510	n/a	M5x10 Flush Self Clinching PEM Stud	6

UNLESS OTHERWISE SPECIFIED:
 DIMENSIONS ARE IN MILLIMETERS
 SURFACE FINISH:
 TOLERANCES:
 LINEAR: ± 0.2 mm
 ANGULAR: ± 0.2 °

DEBUR AND
 BREAK SHARP
 EDGES

THICKNESS: mm
 WEIGHT: 4687.98 g
 DO NOT SCALE DRAWING

MATERIAL: SEE BOM
 FINISH:
 AS PER ORDER

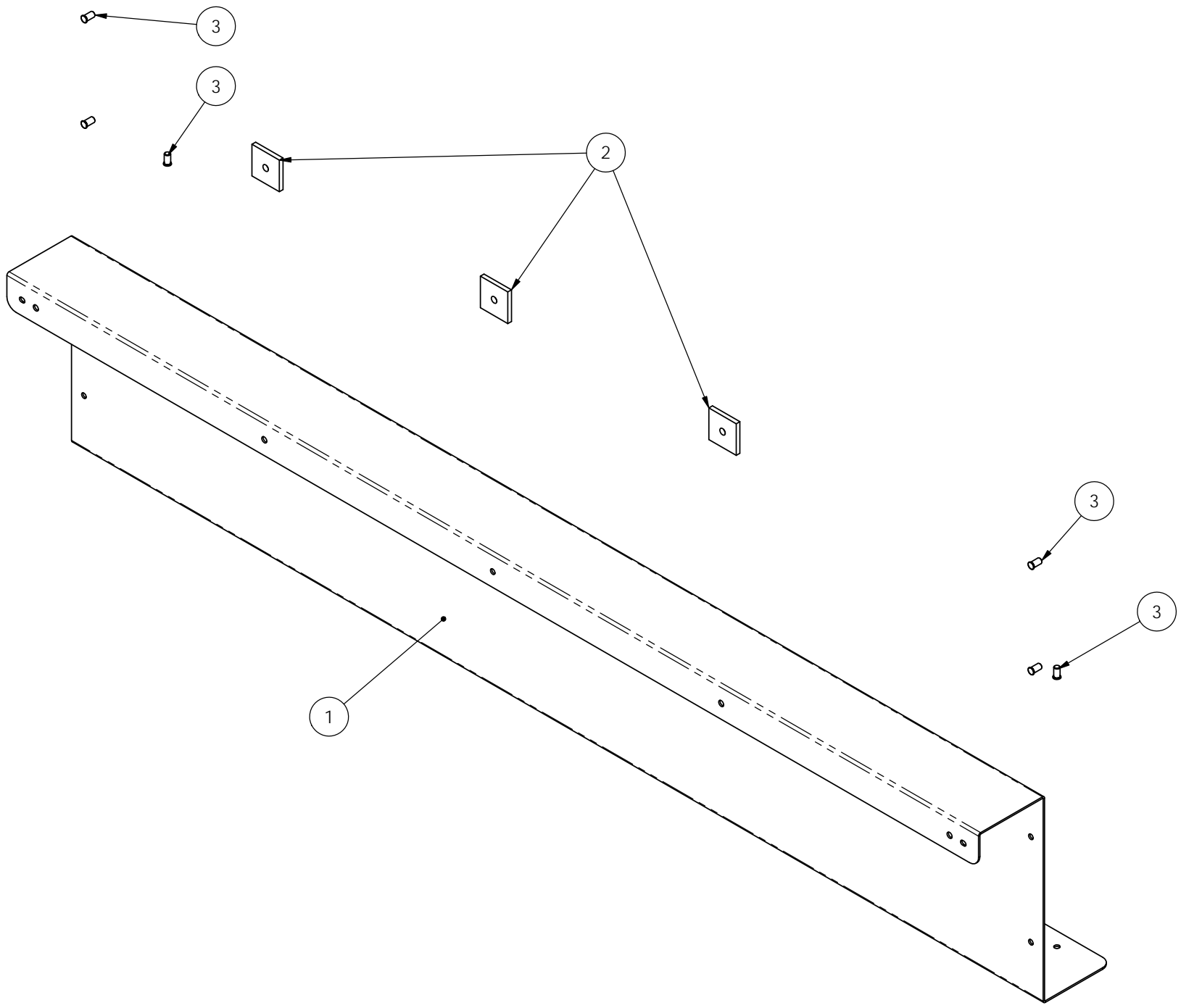


TITLE:
BIO WALL BOX FRONT PLATE SUB-ASSEMBLY 1000

DWG NO.
3A17334

DRAWN	CRG	DATE	20 January 2022 14:47:50	SHEET	1 OF 2
-------	-----	------	--------------------------	-------	--------

REVISION
A
 SCALE: 1:5
A3



UNLESS OTHERWISE SPECIFIED:
 DIMENSIONS ARE IN MILLIMETERS
 SURFACE FINISH:
 TOLERANCES:
 LINEAR: ± 0.2 mm
 ANGULAR: ± 0.2 °

DEBUR AND
 BREAK SHARP
 EDGES

THICKNESS: mm
 WEIGHT: 4687.98 g
 DO NOT SCALE DRAWING

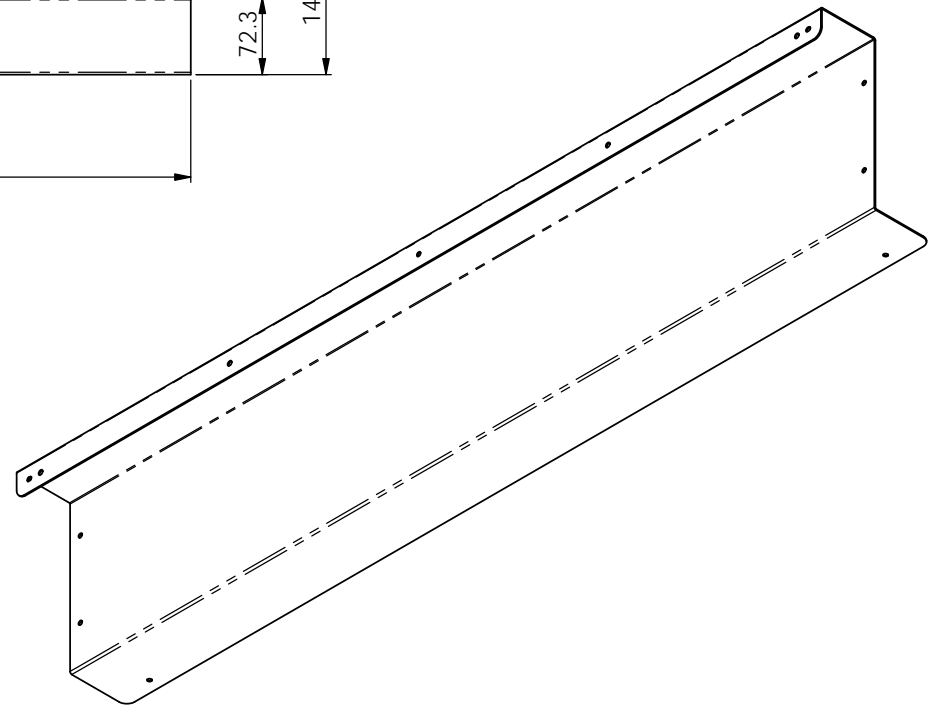
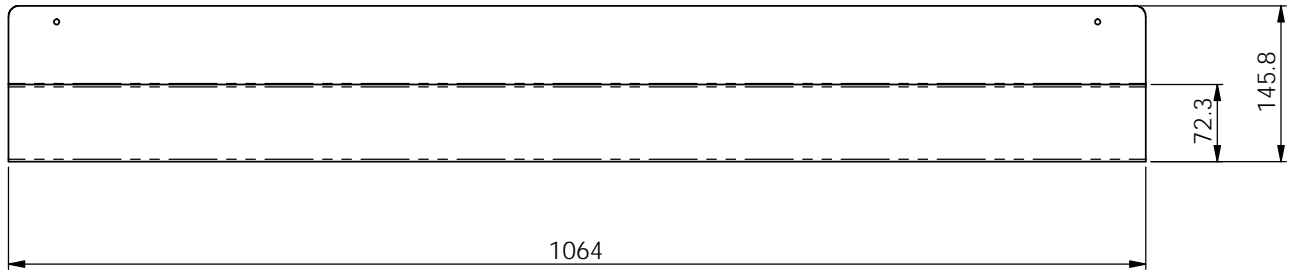
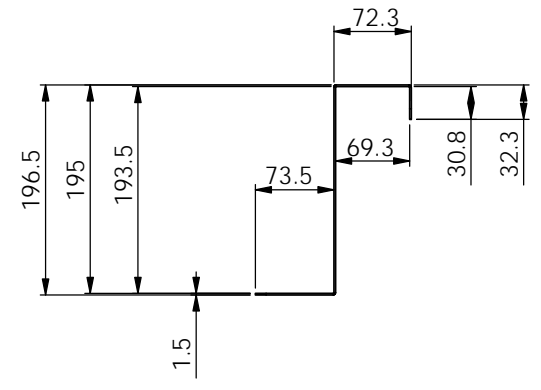
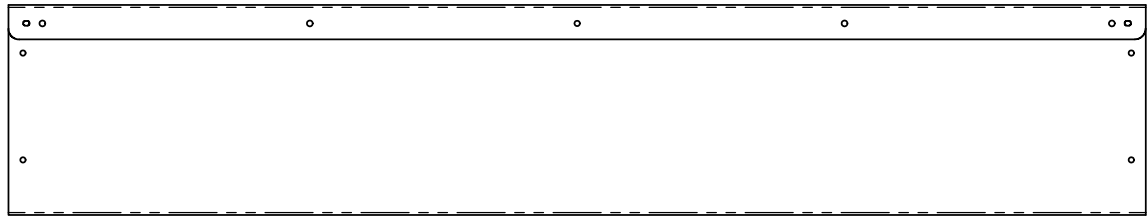
MATERIAL: SEE BOM
 FINISH:
 AS PER ORDER



TITLE: BIO WALL BOX FRONT PLATE SUB-ASSEMBLY 1000

DWG NO. 3A17334
 DRAWN CRG DATE 20 January 2022 14:47:50 SHEET 2 OF 2

REVISION A
 SCALE 1:3
 A3



UNLESS OTHERWISE SPECIFIED:
 DIMENSIONS ARE IN MILLIMETERS
 SURFACE FINISH:
 TOLERANCES:
 LINEAR: ± 0.2 mm
 ANGULAR: ± 0.2 °

DEBUR AND
 BREAK SHARP
 EDGES

THICKNESS: 1.5 mm
 WEIGHT: 4596.87 g
 DO NOT SCALE DRAWING

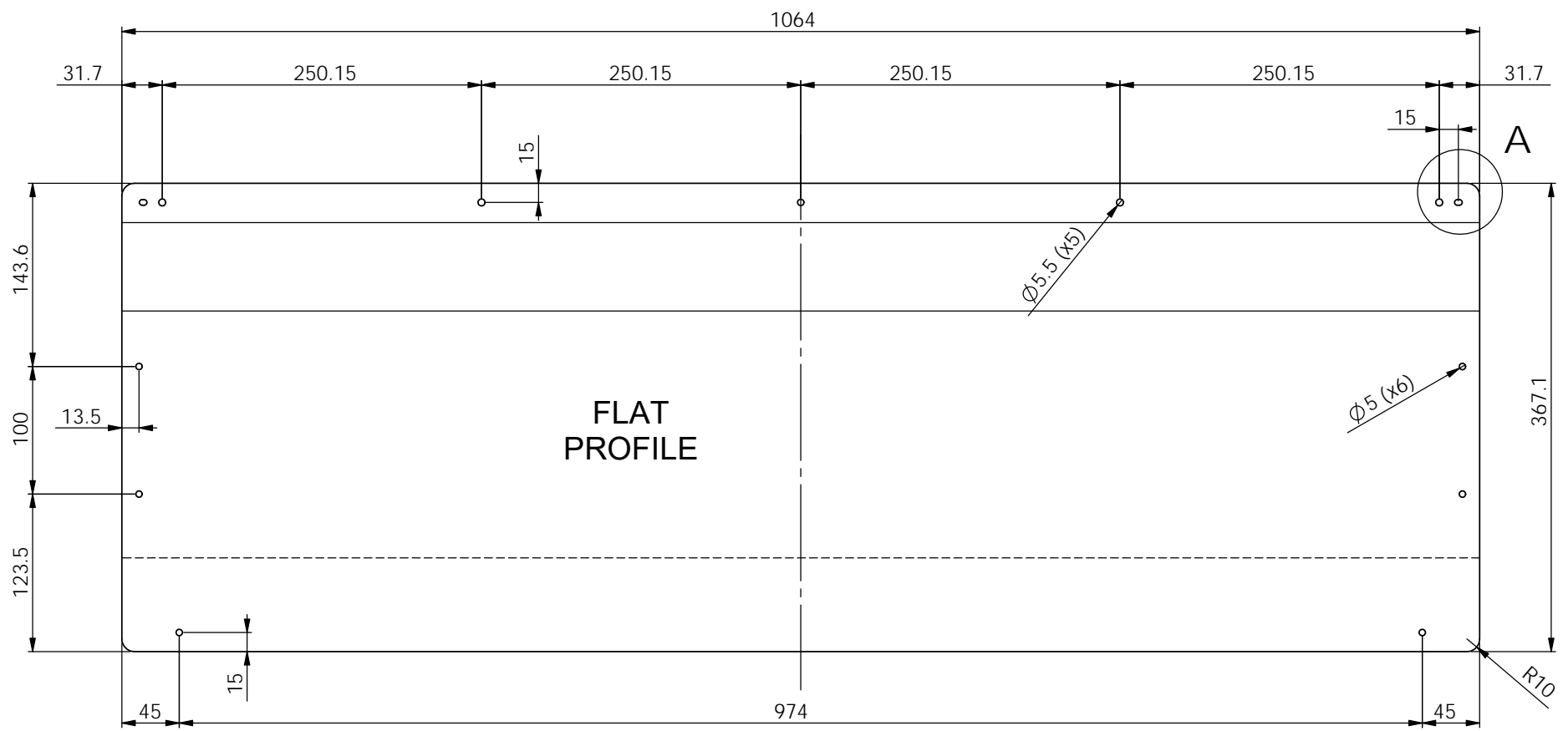
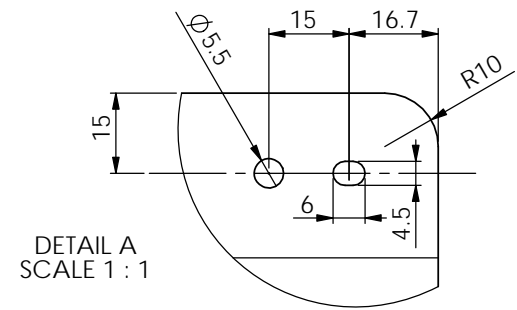
MATERIAL: Cold Reduced BSEN10130
 FINISH:
 SELF COLOUR



TITLE: **BIO WALL BOX FRONT PLATE FOLDING 1000**

DWG NO. **3C17334**
 DRAWN CRG DATE 20 January 2022 14:40:56 SHEET 1 OF 2

REVISION **A**
 SCALE: 1:5
 A3



UNLESS OTHERWISE SPECIFIED: DIMENSIONS ARE IN MILLIMETERS SURFACE FINISH: TOLERANCES: LINEAR: ± 0.2 mm ANGULAR: ± 0.2 °	DEBUR AND BREAK SHARP EDGES	THICKNESS: 1.5 mm	MATERIAL: Cold Reduced BSEN10130	TITLE: BIO WALL BOX FRONT PLATE FOLDING 1000	DWG NO. 3C17334	REVISION A		
		WEIGHT: 4565.70 g	FINISH: SELF COLOUR			SCALE: 1:3.5		
		DO NOT SCALE DRAWING				A3		
				DRAWN	CRG	DATE 20 January 2022 14:40:56	SHEET 2 OF 2	PRINT DATE: 25/01/2022

